



Linn Engineering, Inc.

Civil Engineering Consultants

740-452-7434 • FAX 740-452-5198

534 Market Street • P.O. Box 2086 • Zanesville, Ohio 43702-2086

70-13-02-06-002

Situated in the State of Ohio, County of Muskingum, Township of Washington, bounded and described as follows:

Being a part of Lot 14 of Underwood's Subdivision as designated and delineated in Muskingum County Deed Book "E", Page 62, Township 1 North, Range 7 West, United States Military Lands and being more particularly described as follows:

Beginning for reference at an iron pin found on the southeast corner of said Lot 14;

THENCE North 88 degrees 30 minutes 00 seconds West for a distance of 1959.71 feet along the south line of said Lot 14 to a point in the center of State Route 666;

THENCE North 18 degrees 53 minutes 59 seconds East for a distance of 187.16 feet along the center of State Route 666 to a point, from which a concrete highway monument bears North 69 degrees 22 minutes 48 seconds West 55.91 feet;

THENCE North 17 degrees 21 minutes 03 seconds East for a distance of 323.97 feet along the center of State Route 666 to the principal place of beginning;

THENCE North 68 degrees 22 minutes 00 seconds West for a distance of 216.69 feet along the north line of lands now or formerly owned by Andrew Cornett (DR 1065-344) to a point on the mean high water mark of the Muskingum River, passing iron pins found at 30.00 feet and 195.32 feet;

THENCE along the mean high water mark of the Muskingum River the following four courses:

- 1) North 20 degrees 05 minutes 50 seconds East for a distance of 227.24 feet;
- 2) North 29 degrees 04 minutes 18 seconds East for a distance of 213.85 feet;
- 3) North 25 degrees 41 minutes 42 seconds East for a distance of 305.64 feet;
- 4) North 23 degrees 25 minutes 29 seconds East for a distance of 183.62 feet to a point;

THENCE South 68 degrees 09 minutes 34 seconds East for a distance of 143.94 feet to a point in the center of State Route 666;

THENCE South 20 degrees 09 minutes 53 seconds West for a distance of 927.40 feet along the center of State Route 666 to the principal place of beginning;

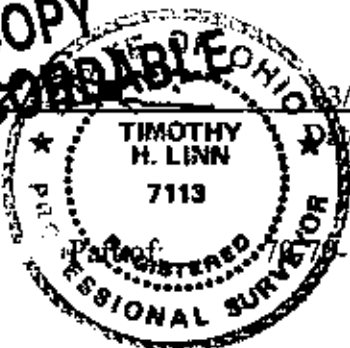
containing 3.92 acres, more or less, subject to all applicable right of ways and easements, written or implied.

PORT AUTHORITY TO SANDS
PAGE 2

Bearings on based on NAD 83 State Plane Grid Coordinate System as per GPS observations made in February 1998.

This description is written based on a survey completed February 16, 1998 by Timothy H. Linn, Reg. No. 7113

OFFICE COPY
NOT RECORDED
Timothy H. Linn
Reg. No. 7113



3/24/98

Date

PARCEL NO:

76-13-02-13-000 (3.92 ac.)

DESCRIPTION APPROVED
FOR AUDITORS/TRANSFER
BY ALB
3-26-98

SITUATED IN

The State of Ohio, County of Muskingum,
Township of Washington, and being a part
of Lot 14 of UNDERWOOD'S SUBDIVISION,
Deed Book E, Page 62, T-1N, R-7W, U.S.M.L.

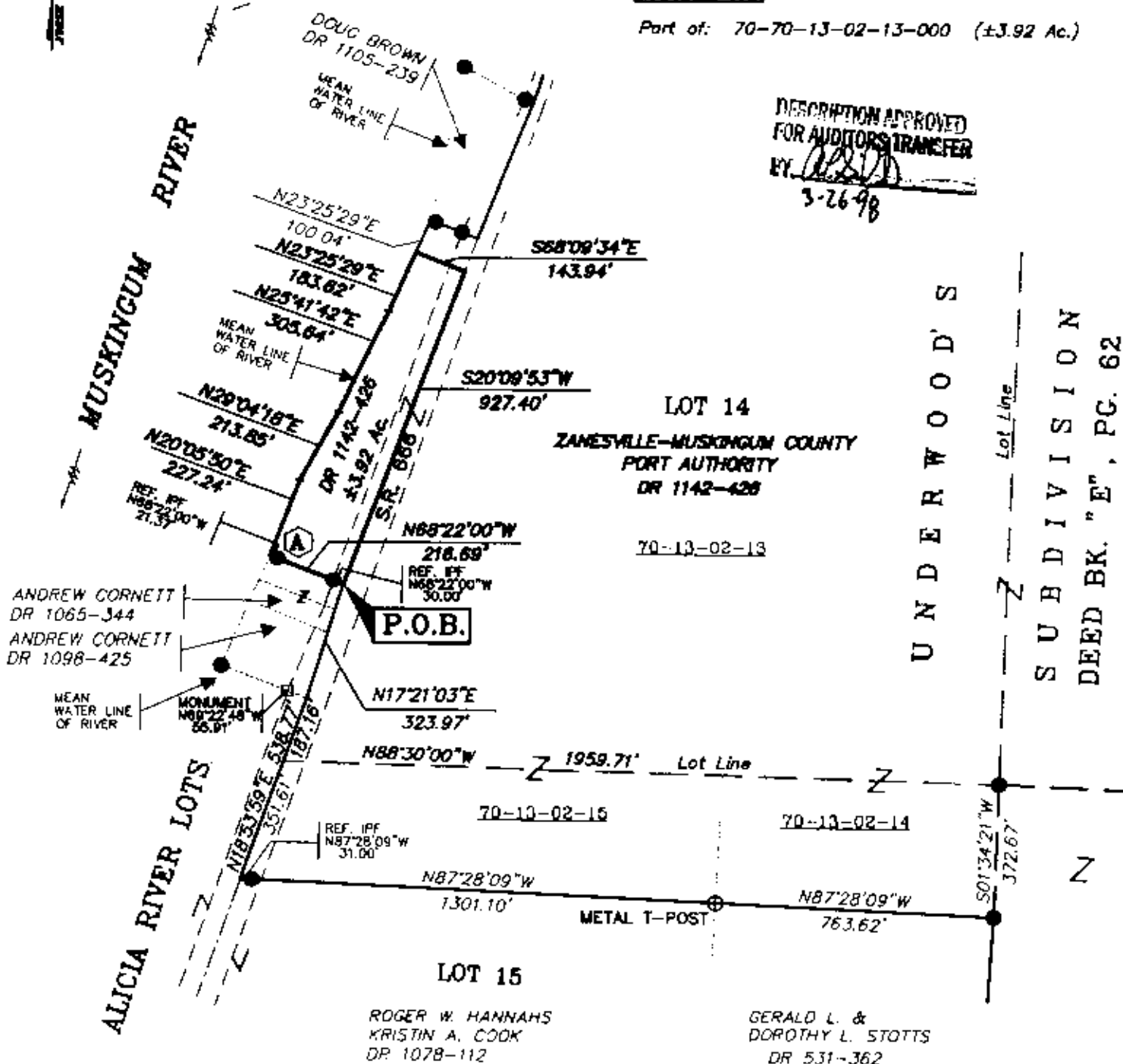
BASIS OF BEARING

Bearings are based on NAD 83 State
Plane Grid Coordinate System as per GPS
observations made in February 1998.

PARCEL NO:

Part of: 70-70-13-02-13-000 (±3.92 Ac.)

DESCRIPTION APPROVED
FOR AUDITORS TRANSFER
BY *[Signature]*
3-26-98



LEGEND

- Iron Pin Set, 5/8" rebar
30" long w/ plastic I.D. Cap
- Iron Pipe Found
- Iron Pin Found
- ⊕ Corner Post Found

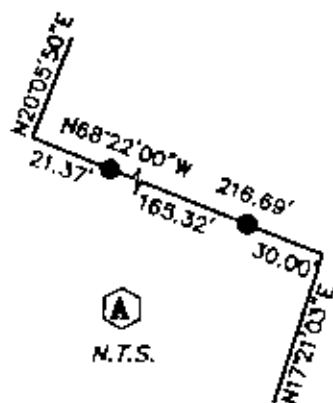
GRAPHIC SCALE



(IN FEET)

1 inch = 400 feet

DETAILS



OFFICE COPY
NOT RECORDABLE

OFFICE COPY
NOT RECORDABLE
STATE OF OHIO
TIMOTHY H. SANDS
Reg. Surveyor No. 10128
PROFESSIONAL SURVEYOR

Project No.: SANDS-957



Linn Engineering, Inc. 740-452-7484
Civil Engineering Consultants
P.O. Box 2086 Zanesville, Ohio 43702-2086