

Road and Alley Vacations in Wm. T. McBride's Addition to the City of Zanesville

Being a part of land located in the State of Ohio, County of Muskingum, Washington Township, part of Quarter Township 3, and part of Wm T. McBride's Addition to the City of Zanesville (RePlat Book 1, Page 255), Township 1 North, Range 7 West, United States Military Lands, bounded and described as follows:

1. PORTION OF A 50' WIDE STREET:

Beginning at an iron pin found at the southwest corner of Lot 19 of McBride's Addition (Replat Book 1, page 255);

thence along the south line of a public street (50' wide) South 79 degrees 03 minutes 33 seconds West 50.00 feet to an iron pin found at the southeast corner of Lot 18;

thence along the west line of said 50' wide public street North 10 degrees 56 minutes 27 seconds West 150.00 feet to an iron pin found, being the northeast corner of Lot 14;

thence leaving the west line of said 50' wide public street North 79 degrees 03 minutes 33 seconds East 50.00 feet to a point on the east line of said 50' wide public street, also being the northwest corner of Lot 15;

thence along the east line of 50' wide public street South 10 degrees 56 minutes 27 seconds East 150.00 feet to the place of beginning containing 0.1722 acres, more or less.

Acreages to be added to Parcel #:

70-55-02-07-000 (\pm 0.0287 acres)

70-55-02-10-000 (\pm 0.0574 acres)

70-55-02-13-000 (\pm 0.0287 acres)

70-55-02-14-000 (\pm 0.0287 acres)

70-55-02-15-000 (+ 0.0287 acres)

TOTAL \pm 0.1722 ACRES

2. ALL OF AN 8' WIDE ALLEY AND A 16' WIDE ALLEY WEST OF PUBLIC STREET:

Beginning at an iron pin found at the southwest corner of Lot 18 of McBride's Addition (Replat Book 1, page 255);

thence along the south line of an 8' wide alley South 79 degrees 03 minutes 33 seconds West 8.00 feet to a point, being the southwest corner of said 8' wide alley;

thence along the west line of said 8' wide alley North 10 degrees 56 minutes 27 seconds West 366.00 feet to a point, being the southwest corner of Lot 1;

thence along the south lines of Lot 1 and Lot 2 North 79 degrees 03 minutes 33 seconds East 120.00 feet to a point on the west line of a 50' wide public street;

thence along the west line of said 50' wide public street South 10 degrees 56 minutes 27 seconds East 16.00 feet to a point, being the northeast corner of Lot 6;

thence along the north line of Lot 6 South 79 degrees 03 minutes 33 seconds West 112.00 feet to a point, being the northwest corner of Lot 6;

thence along the west lines of Lots 6, 8, 10, 12, 14, 16, and 18 South 10 degrees 56 minutes 27 seconds East 350.00 feet to the place of beginning containing 0.1084 acres, more or less.

Acreages to be added to Parcel #:

70-55-02-13-000 (\pm 0.0092 acres)

70-55-02-14-000 (\pm 0.0092 acres)

70-55-02-15-000 (+ 0.0092 acres)

70-55-02-16-000 (\pm 0.0092 acres)

70-55-02-17-000 (\pm 0.0092 acres)

70-55-02-18-000 (+ 0.0092 acres)

70-55-02-19-000 (+ 0.0312 acres)

70-55-02-20-000 (+ 0.0220 acres)

TOTAL \pm 0.1084 ACRES

3. ALL OF AN 8' WIDE ALLEY AND A 16' WIDE ALLEY EAST OF PUBLIC STREET:

Beginning at an iron pin found at the northwest corner of Lot 7 of McBride's Addition (Replat Book 1, page 255), being on the east line of a 50' wide public street;

thence along the east line of said 50' wide public street North 10 degrees 56 minutes 27 seconds West 16.00 feet to a point, being the southwest corner of Lot 5;

thence leaving the east line of said 50' wide public street and along the south line of Lot 5 North 79 degrees 03 minutes 33 seconds East 117.26 feet to a point, being the southeast corner of Lot 5;

thence along the east lines of Lot 5 and Lot 4 North 12 degrees 26 minutes 27 seconds West 225.53 feet to a point on the south right-of-way of East Pike (United States Route 40);

thence along the south right-of-way of East Pike (United States Route 40) North 64 degrees 14 minutes 45 seconds East 8.22 feet to a point, being on the east line of an 8' wide alley;

thence leaving the south right-of-way of East Pike (United States Route 40) and along the east line of an 8' wide alley South 12 degrees 26 minutes 27 seconds East 593.74 feet to a point, being the southeast corner of an 8' wide alley;

thence along the south line of said 8' wide alley South 79 degrees 03 minutes 33 seconds West 8.00 feet to a point, being the southeast corner of Lot 19;

thence along the east line of Lots 19, 17, 15, 13, 11, 9, and 7 North 12 degrees 26 minutes 27 seconds West 350.10 feet to a point, being the northeast corner of Lot 7;

thence along the north line of Lot 7 South 79 degrees 03 minutes 33 seconds West 117.68 feet to the place of beginning containing 0.1520 acres, more or less.

Acreages to be added to Parcel #:

70-55-02-01-000 (+ 0.0260 acres)

70-55-02-04-000 (\pm 0.0386 acres)

70-55-02-05-000 (\pm 0.0568 acres)

70-55-02-07-000 (+ 0.0092 acres)

70-55-02-10-000 (+ 0.0032 acres)
70-55-02-25-001 (+ 0.0182 acres)
TOTAL \pm 0.1520 ACRES

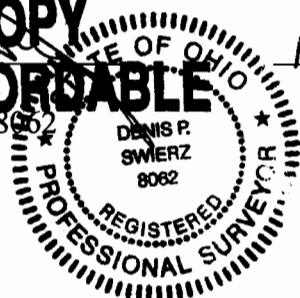
This legal description was written by Denis P. Swierz based on a field survey completed October 2012 by Muskingum County Engineers' Office. The bearings in this description are based on NAD 83, Ohio South Zone, State Plane Coordinates as per GPS observations from Muskingum County Engineer monument – GPS 22.

Subject to all easements, right of ways, restrictions, reservations, etc.. of record and those that may be implied.

OFFICE COPY

NOT RECORDED

Reg. Surv. No. 8062



11/26/12
Date

DESCRIPTION

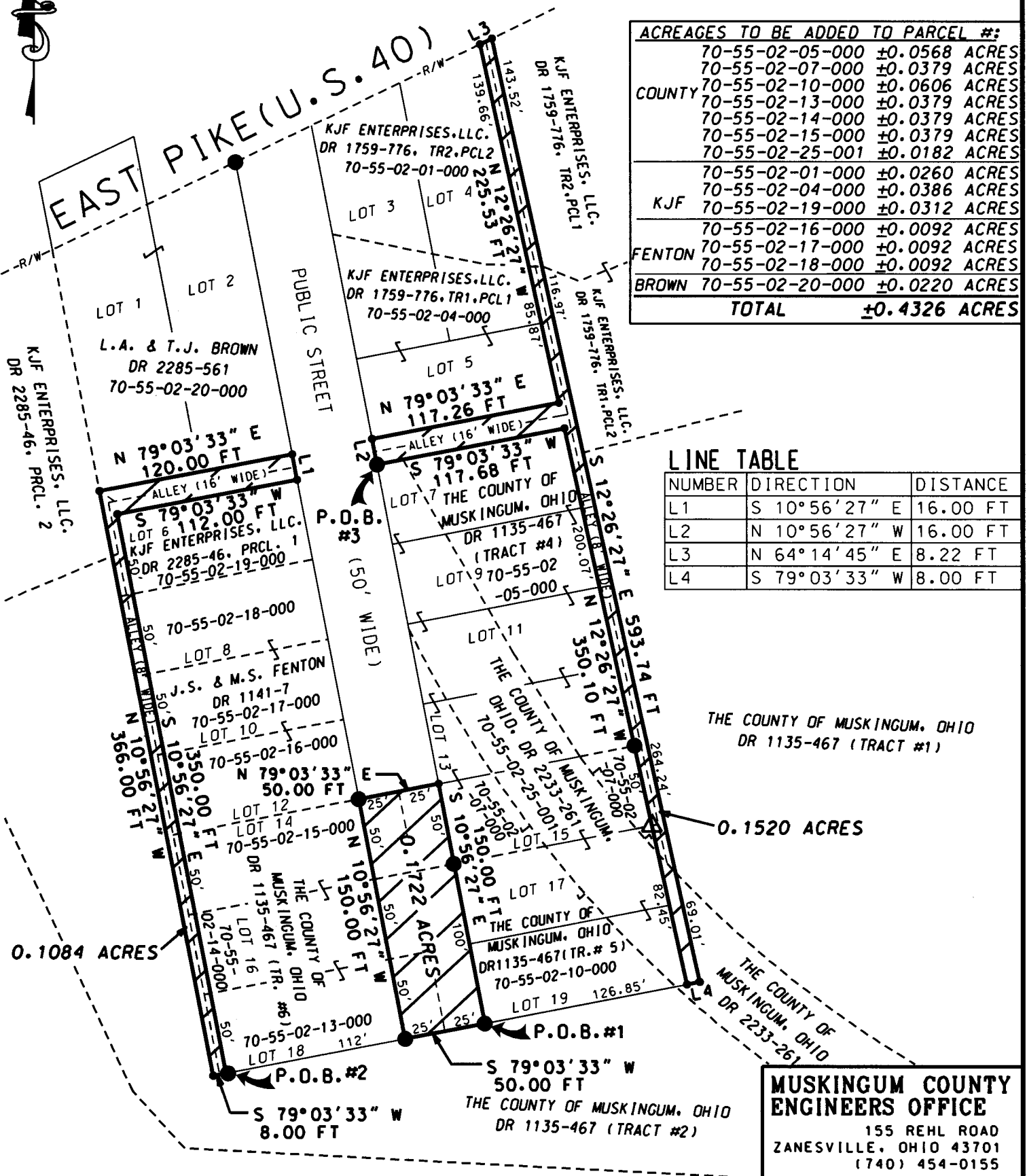
APPROVED

By:

[Signature] 11/28/12

VACATION OF ALLEYS AND ROADS IN McBRIDE'S ADDITION TO THE CITY OF ZANESVILLE (REPLAT BOOK 1, PAGE 255)

STATE OF OHIO, MUSKINGUM COUNTY, WASHINGTON TOWNSHIP,
PART OF QUARTER TOWNSHIP 3, TOWNSHIP 1 NORTH, RANGE 7
WEST, UNITED STATES MILITARY LANDS



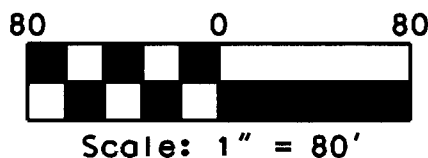
DESCRIPTION
APPROVED
By: *[Signature]* 11/28/12

BASIS OF BEARING:

BEARINGS ARE BASED ON NAD 83, OHIO SOUTH ZONE, STATE PLANE COORDINATES AS PER GPS OBSERVATIONS FROM MUSKINGUM COUNTY ENGINEER GPS MONUMENT - GPS 22.

PERTINENT DOCUMENTS AND SURVEYS USED:

1. DEED REFERENCES SHOWN
2. TAX MAPS
3. SURVEY RECORDS FOUND IN THE MUSKINGUM COUNTY ENGINEERS OFFICE, ZANESVILLE, OHIO.



LEGEND

- AREA TO BE VACATED
- IRON PIN FOUND
- MAG-NAIL FOUND
- POINT

MUSKINGUM COUNTY ENGINEERS OFFICE

155 REHL ROAD
ZANESVILLE, OHIO 43701
(740) 454-0155

I HEREBY CERTIFY THIS PLAT
TO BE CORRECT AS SURVEYED
OCTOBER 2012



OFFICE COPY
NOT RECORDABLE

DATE 11/26/12