



EARL R. DONAKER
PROFESSIONAL SURVEYOR

70-55-03-13
1687 WHEELING AVE

727 Cambridge Road
Coshocton, Ohio 43812

(614) 623-0993

Barclays American Financial Services, Inc.

0.230 Ac. +/-

Parcel # 71-70-55-03-13-000, (part)

Being 0.230 acre, more or less, in the southeast quarter of the third quarter of township 1 north, range 7 west, United States Military Lands, and in the township of Washington, in the county of Muskingum, in the state of Ohio and more particularly described as follows:

Beginning at a 5/8" rebar found at the intersection of the east corporation line of the city of Zanesville and the U.S. Military Base Line, said 5/8" rebar found being the TRUE POINT OF BEGINNING;

thence, with the east corporation line, N.01°48'23"W. 117.22' to an 1" axle found;

thence, through the property of Barclays American Financial Services, Inc. (998/441), the following 2 courses:

1. thence, with the occupational tree line, S.88°56'59"E. 93.00' to a 5/8" rebar set;
2. thence, continuing with the occupational tree line, S.88°56'59"E. 12.77' to a point in a 16' alley;

thence, with the property line of Lulu M. Brown, (549/435), S.39°36'16"E. 3.64' to a point in the 16' alley;

thence, with the property line of Myrtle B. Corbin, (523/757, 255/221), S.20°58'00"W. 124.32' to an 1" axle found on the U.S. Military Base Line;

thence, with the U.S. Military Base Line, N.86°30'00"W. 60.00' to the TRUE POINT OF BEGINNING, containing 0.230 acre, more or less, including public road right-of-way and is subject to all easements, rights-of-way, or restrictions, whether recorded or implied.

Bearings are based on Deed Book 998, page 441.
All 5/8" rebars set are 30" long.

Prior deed: 998/441.

Pertinent documents: Surveys by W. J. Biedenbach, Charles R. Harkness, and Loren C. Camp, tax maps, and deeds: 947/103, 310/326, 549/435, 523/757, 255/221, 754/237, 998/441.

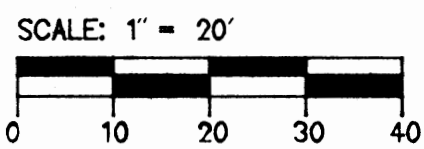
Description and plat by Earl R. Donaker, Professional Surveyor, #7142, from a survey of the premises dated January, 1989.

DESCRIPTION APPROVED
FOR AUDITOR'S TRANSFER

BY J. J. Hank
1-27-89

OFFICE COPY
NOT RECORDABLE

EARL R. DONAKER
PROFESSIONAL SURVEYOR
 727 CAMBRIDGE ROAD
 COSHOCTON, OHIO 43812
 PH: 614 623-0993
 REMOVE NOT THE OLD LANDMARK PROVERBS 23:10



DESCRIPTION APPROVED
 FOR AUDITOR'S TRANSFER
 BY J. L. Nambler
 1-27-89

RODERICK WILLIAM,
 MARGARET J.,
 BARNES
 947/103

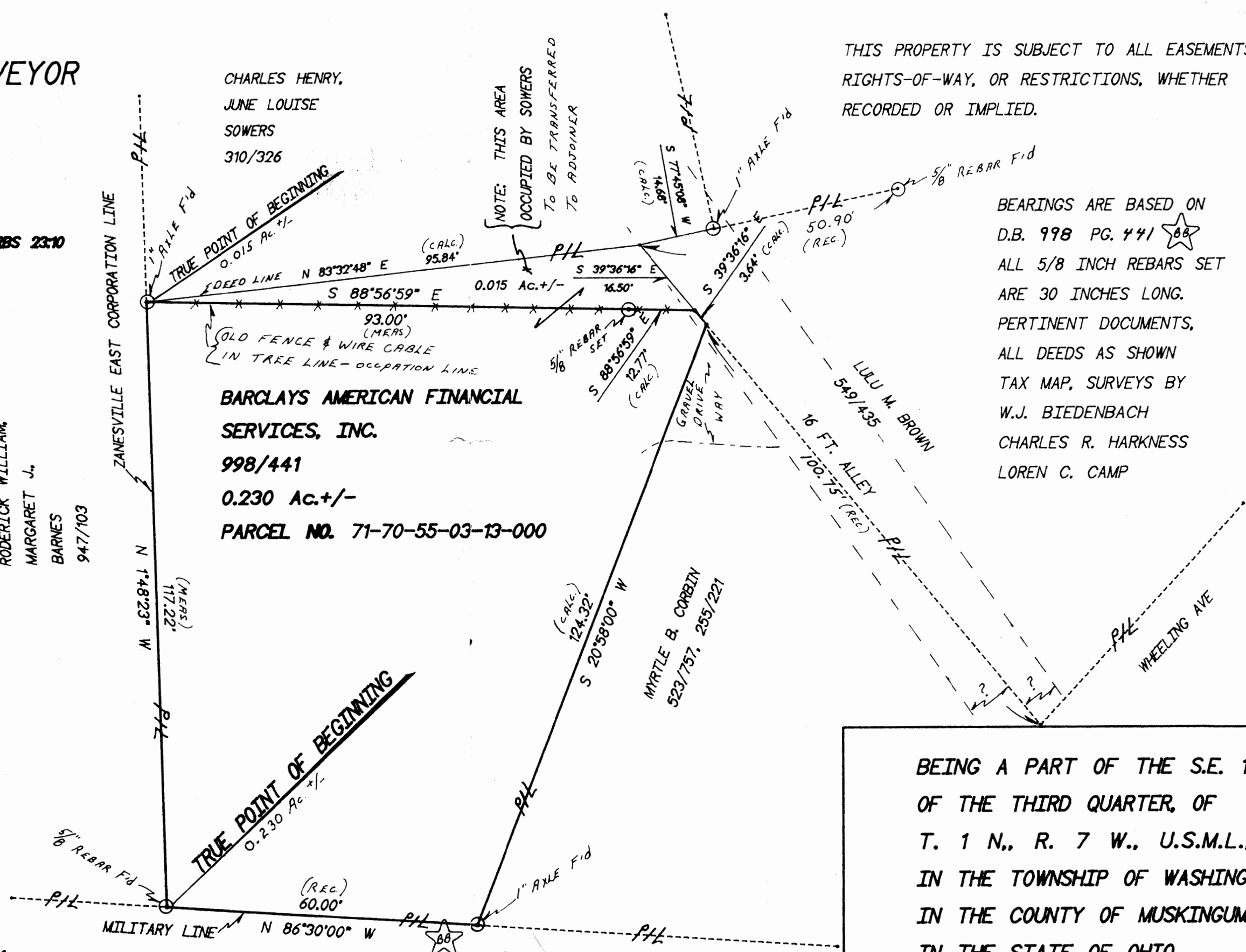
CHARLES HENRY,
 JUNE LOUISE
 SOWERS
 310/326

**BARCLAYS AMERICAN FINANCIAL
 SERVICES, INC.**
998/441
0.230 Ac. +/-
PARCEL NO. 71-70-55-03-13-000

NOTE: THIS AREA
 OCCUPIED BY SOWERS
 TO BE TRANSFERRED
 TO ADJOINER

THIS PROPERTY IS SUBJECT TO ALL EASEMENTS,
 RIGHTS-OF-WAY, OR RESTRICTIONS, WHETHER
 RECORDED OR IMPLIED.

BEARINGS ARE BASED ON
 D.B. 998 PG. 441
 ALL 5/8 INCH REBARS SET
 ARE 30 INCHES LONG.
 PERTINENT DOCUMENTS,
 ALL DEEDS AS SHOWN
 TAX MAP, SURVEYS BY
 W.J. BIEDENBACH
 CHARLES R. HARKNESS
 LOREN C. CAMP



**OFFICE COPY
 NOT RECORDED**
 I, EARL R. DONAKER, P.S., 7142, HEREBY
 CERTIFY THIS PLAT TO HAVE BEEN PREPARED
 FROM A SURVEY AND TO BE CORRECT TO THE

BEING A PART OF THE S.E. 1/4,
 OF THE THIRD QUARTER, OF
 T. 1 N., R. 7 W., U.S.M.L.,
 IN THE TOWNSHIP OF WASHINGTON,
 IN THE COUNTY OF MUSKINGUM,
 IN THE STATE OF OHIO.
 SCALE: 1" = 20'
 DATE: JANUARY, 1989