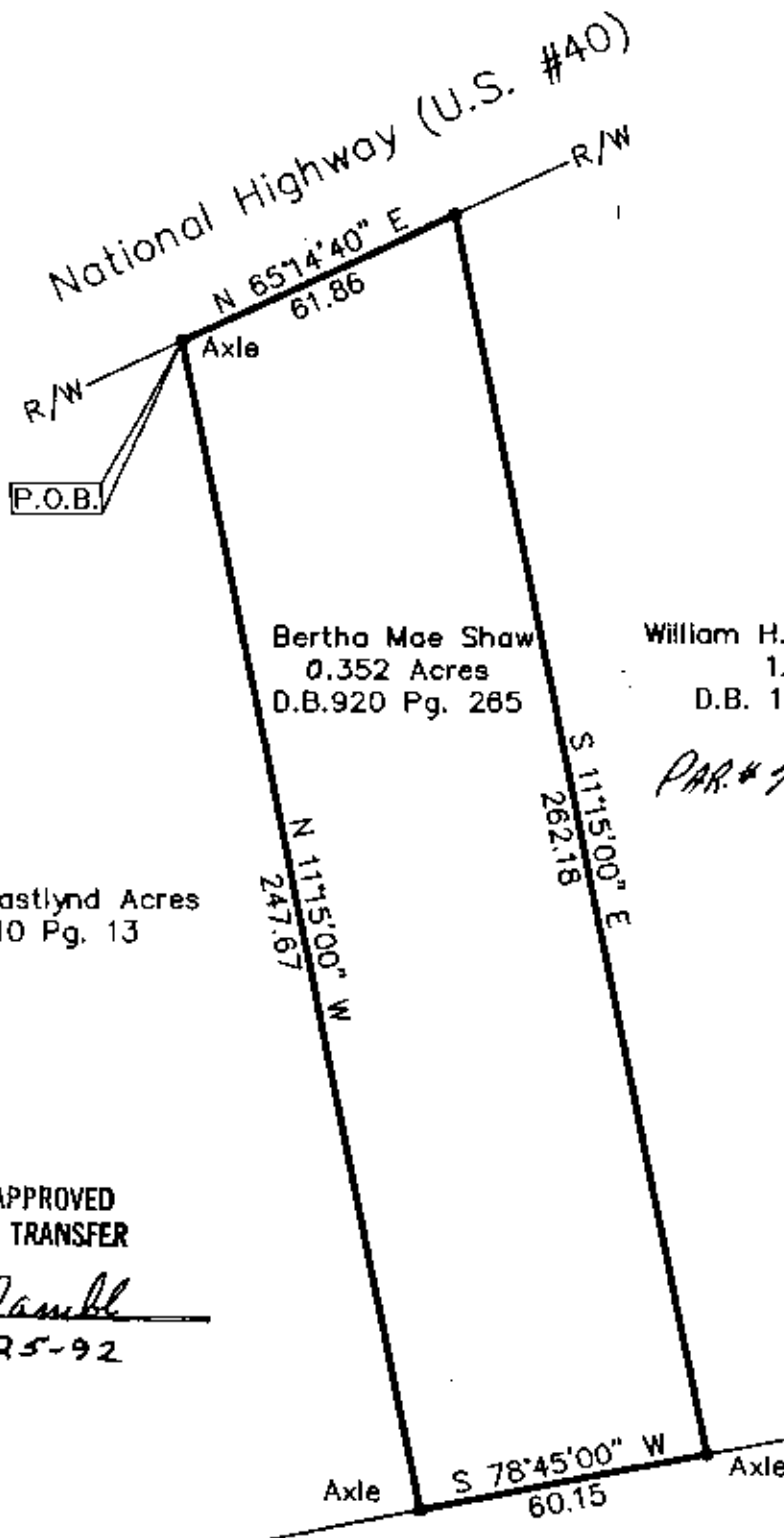


Boundary Survey of 0.352 Acres

State of Ohio, County of Muskingum, Township of Washington
Qtr. Twp. 3, Rng. 7, Twp. 1 U.S. Military Lands



Scale 1" = 40'



Bertha Mae Shaw
0.352 Acres
D.B. 920 Pg. 265

William H. & Pamela J. Hague
1.01 Acres
D.B. 1055 Pg. 589

PAR # 71-70-58-05-02.000

Lot 2 Eastlynd Acres
P.B. 10 Pg. 13

• = I.P. FND.
o = I.P. SET

DESCRIPTION APPROVED
FOR AUDITOR'S TRANSFER

BY JL Hambl
8-25-92

Lot 3 Eastlynd Acres
P.B. 10 Pg. 13

I hereby declare that this plot was prepared from an actual field survey and is true and correct to the best of my knowledge information and belief. The Basis of bearings is N 65°14'40" E for the line of the National Highway (U.S. #40) and all other Bearings computed from this Meridian.

