

**Linn Engineering, Inc.***Civil Engineering Consultants*

740-452-7434 • FAX 740-452-5198

534 Market Street • P.O. Box 2086 • Zanesville, Ohio 43702-2086

PART OF SANDS MINING CORP. (DR 1063-560)

Situated in the State of Ohio, County of Muskingum, Township of Washington, bounded and described as follows:

Being a part of the 4th Quarter of Township 1 North, Range 7 West, United States Military Lands and being more particularly described as follows:

Beginning for reference at the southwest corner of said Section 12;

THENCE South 86 degrees 59 minutes 26 seconds East for a distance of 656.46 feet along the south line of said Section 12 to a point, from which an iron pin set bears South 34 degrees 54 minutes 03 seconds East a distance of 2.44 feet;

THENCE South 02 degrees 23 minutes 28 seconds West for a distance of 356.11 feet along the east line of lands now or formerly owned by Robert E. Welch (DR 1119-471) to a 3/4" pipe found;

THENCE South 84 degrees 54 minutes 38 seconds East for a distance of 104.89 feet along the north line of lands now or formerly owned by Sands Mining Corporation (DR 1063-560) to an iron pin found;

THENCE South 04 degrees 32 minutes 04 seconds West for a distance of 327.40 feet along Sands Mining's east line to an iron pin set and the principal place of beginning;

THENCE South 22 degrees 22 minutes 22 seconds East for a distance of 230.73 feet along Sands Mining's east line to a point in the center of Adamsville Road (State Route 93), passing an iron pipe found at 210.37 feet;

THENCE South 59 degrees 10 minutes 26 seconds West for a distance of 31.29 feet along the center of Adamsville Road (State Route 93) to a point;

THENCE North 14 degrees 52 minutes 50 seconds West for a distance of 237.36 feet to the principal place of beginning;

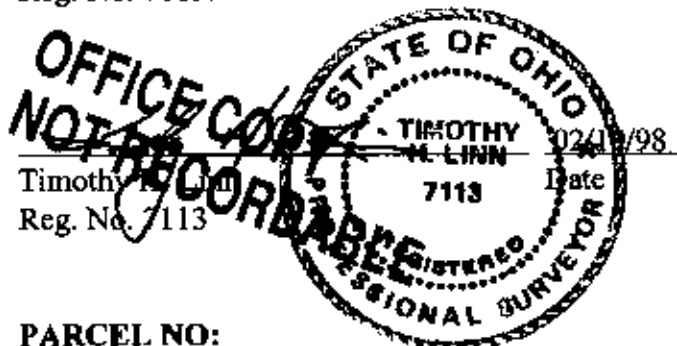
containing 0.08 acres, more or less, subject to all applicable right of ways and easements, written or implied.

Iron pins set are 5/8 inch diameter by 30 inch long rebar with plastic identification caps.

PART OF SANDS MINING CORP. (DR 1063-560)
PAGE 2

Bearings on based on NAD 83 State Plane Grid Coordinate System as per GPS observations made in February 1998.

This description is written based on a survey completed February 19, 1998 by Timothy H. Linn, Reg. No. 7113.



DESCRIPTION APPROVED
FOR AUDITORS TRANSFER
BY [Signature]
2-24-98

PARCEL NO:

Part of: ~~70~~-70-60-02-07-000 (0.08 ac.)
71

SITUATED IN

The State of Ohio, County of Muskingum,
Township of Washington, and being a part
of the northwest quarter of Quarter
Twp. 4, T-1N, R-7W, U.S.M.L.

BASIS OF BEARING

Bearings are based on NAD 83 State
Plane Grid Coordinate System as per GPS
observations made in February 1998.

