

## SITUATED IN

The State of Ohio, County of Muskingum  
Township of Washington and being a part of  
Quarter Twp. 4, T1, R7, U.S.M.L.

## BASIS OF BEARING

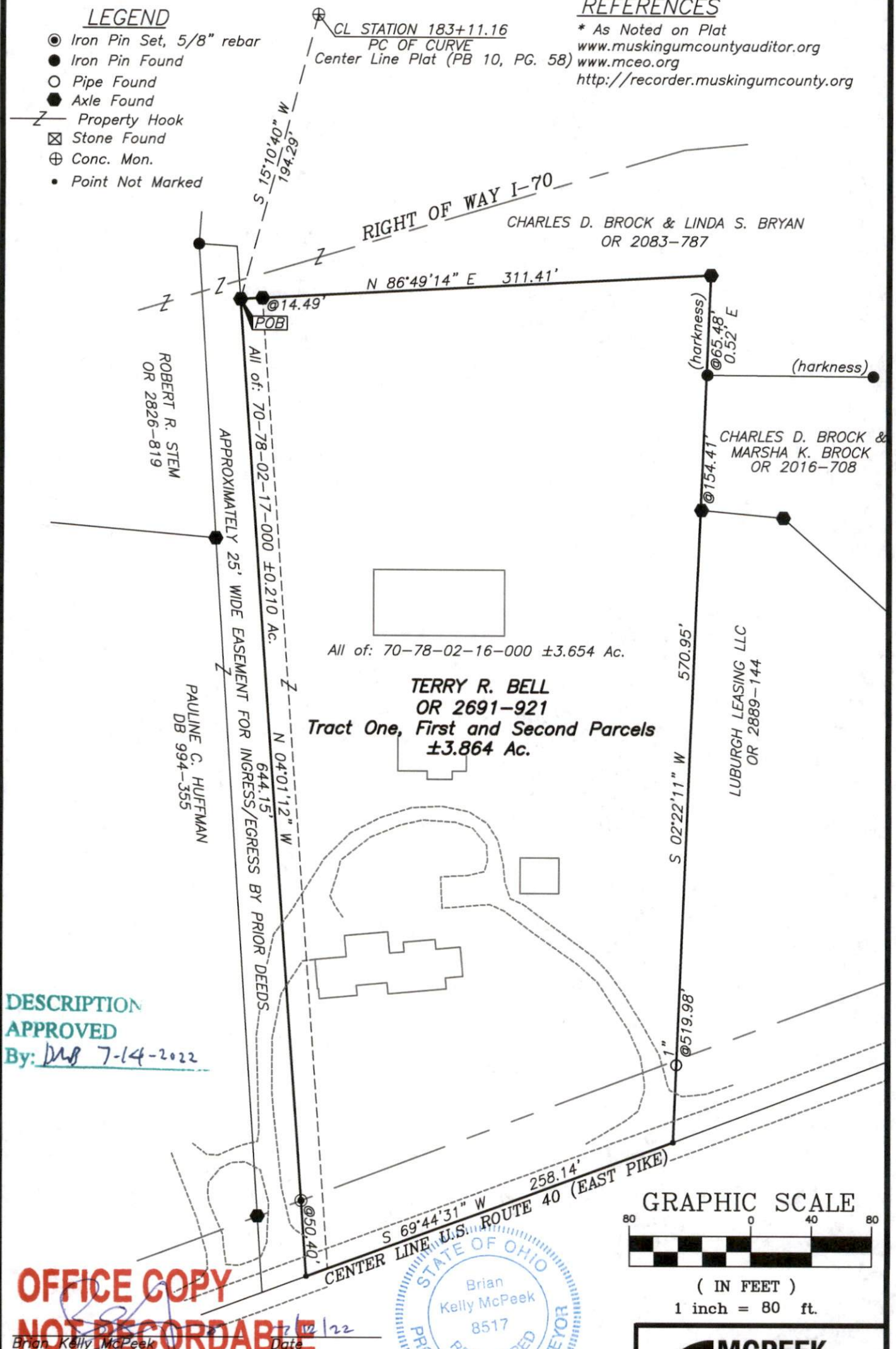
Bearings are based on State Plane Grid Coordinates,  
NAD83, Ohio South, per GPS Observation.

## LEGEND

- Iron Pin Set, 5/8" rebar
- Iron Pin Found
- Pipe Found
- Axle Found
- Z— Property Hook
- ⊠ Stone Found
- ⊕ Conc. Mon.
- Point Not Marked

## REFERENCES

- \* As Noted on Plat
- [www.muskingumcountyauditor.org](http://www.muskingumcountyauditor.org)
- [www.mceo.org](http://www.mceo.org)
- <http://recorder.muskingumcounty.org>



DESCRIPTION  
APPROVED

By: DW 7-14-2022

OFFICE COPY  
NOT RECORDABLE

Brian Kelly McPeck  
Reg. Surveyor No. 8517

This plat was prepared by McPeck Land Surveying, LLC  
in accordance with Chapter 4733-37 of the Administrative Code,  
and is intended to be used for the legal transfer of the property  
described and does not intend to describe all or any easements of  
record, nor encroachments unless otherwise intended.

**MCPECK  
LAND  
SURVEYING**  
LLC

[www.mcpecklandsurveying.com](http://www.mcpecklandsurveying.com)  
email: [brian@mcpecklandsurveying.com](mailto:brian@mcpecklandsurveying.com)  
340 Robin Hood Ln., Zanesville, Oh 43701 • 740.704.6073