

## SITUATED IN

The State of Ohio, County of Muskingum  
Township of Washington, and being a part of the  
4th Quarter Twp., T1, R7.

## BASIS OF BEARING

Bearings are based on State Plane Grid Coordinates  
NAD83, Ohio South, per GPS Observation.

## REFERENCES

\* As Noted on Plat  
[www.muskingumcountyauditor.org](http://www.muskingumcountyauditor.org)  
[www.mceo.org](http://www.mceo.org)  
<http://recorder.muskingumcounty.org>

## LEGEND

- Iron Pin Set, 5/8" rebar
- Iron Pin Found
- Pipe Found
- Right-of-Way
- Axle Found
- ▲ Railroad Spike Found
- △ Railroad Spike Set
- ⊕ Corner Post
- Z— Property Hook

DESCRIPTION

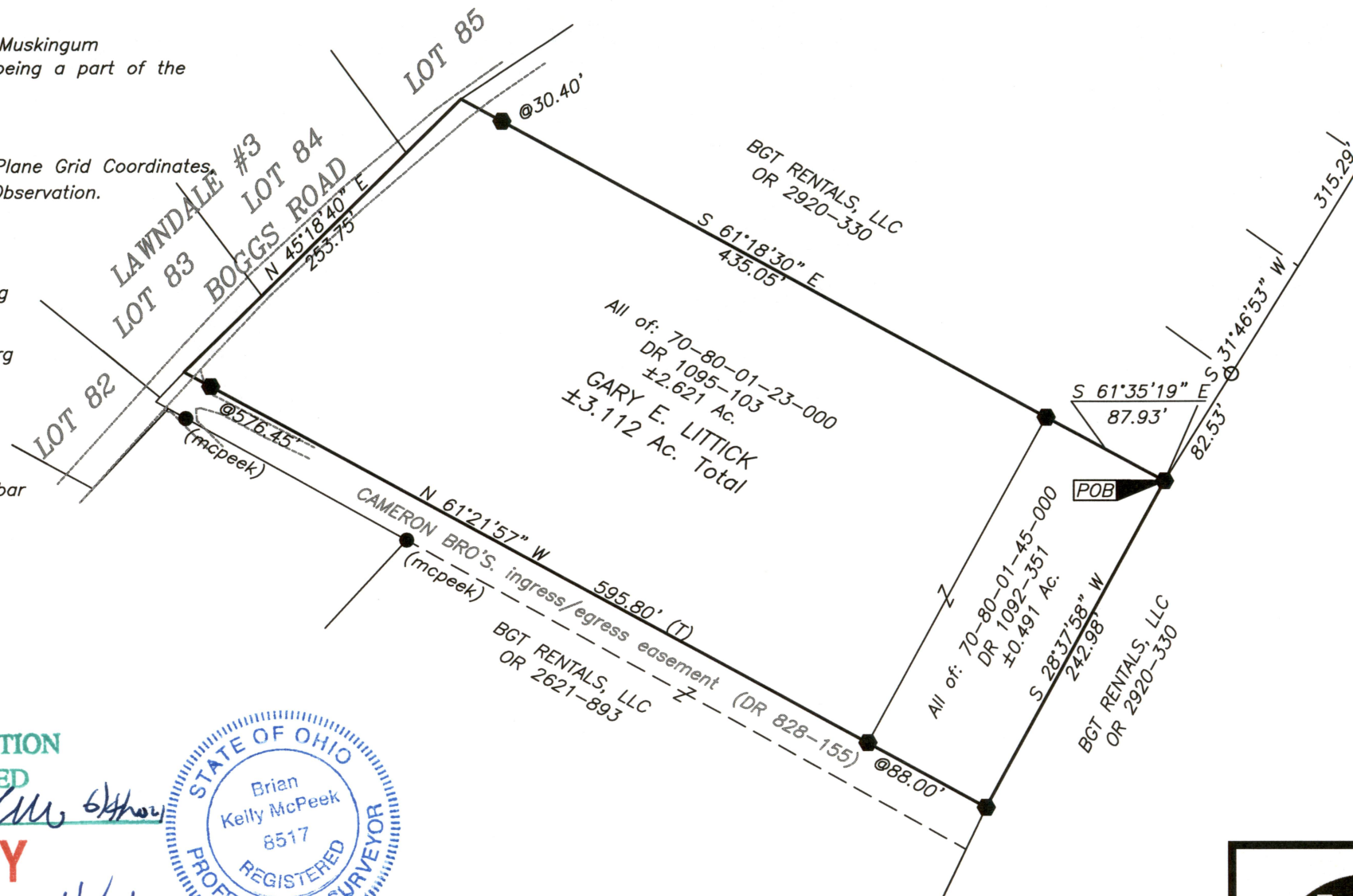
APPROVED

By: *BKM 6/2/21*

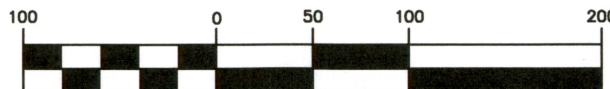
**OFFICE COPY**  
**NOT RECORDABLE**

Brian Kelly McPeek  
Reg. Surveyor No. 8517

This plat was prepared by McPeek Land Surveying, LLC  
in accordance with Chapter 4733-37 of the Administrative Code,  
and is intended to be used for the legal transfer of the property  
described and does not intend to describe all or any easements of  
record, nor encroachments unless otherwise intended.



GRAPHIC SCALE



( IN FEET )

1 inch = 100 ft.

SW CRNR. LOT 9  
SUNSET ACRES  
PB 9, PAGE 55



[www.mcpeeklandsurveying.com](http://www.mcpeeklandsurveying.com)  
email: [brian@mcpeeklandsurveying.com](mailto:brian@mcpeeklandsurveying.com)  
340 Robin Hood Ln., \* Zanesville, Oh 43701 \* 740.704.6073