

**BOWMAN SURVEYING  
38 N. 4<sup>TH</sup> STREET, RM. 103  
ZANESVILLE, OHIO  
PH./FAX (740) 454-0486**

73-33-01-02  
1570 South River Road

**SURVEY DESCRIPTION  
FOR  
Federal National Mortgage Association**

All of Auditors Parcel  
73-33-01-02-000 (4.28 Acres)

Situated in Fractional Section 15, T-12, R-13, Wayne Township, Muskingum County, Ohio.

Beginning at a point in the center of State Route 60 (South River Road) and the center of a 48" concrete culvert, located at the center line station of 198+07 as recorded in the right of way plans for MUS-60 (8.11-13.08);

Thence, **S.85°31'49"W.** a distance of **79.52 feet** trough said culvert and along the lands of D. Paul (1128/155) to a point at the low water mark of the Muskingum River;

Thence, **N.02°58'27"W.** a distance of **261.76 feet** along said river to a point on the south west corner of the lands, now or formerly, owned by J. Cavanaugh (733/103);

Thence, **N.87°46'53"E.** a distance of **749.00 feet** along said Cavanaugh lands to a found iron pin on the west line of the lands, now or formerly, owned by D. Thomas (1149/576), passing a found iron pin at 120.27';

Thence, **S.07°46'34"E.** a distance of **293.34 feet** along said Thomas lands and along the lands, now or formerly, owned by D. Paul (1128/155) to a found iron pin;

Thence, **N.60°48'52"W.** a distance of **68.86 feet** along said Paul lands and meandering with the center line of a small ravine to a point;

Thence, **N.63°37'57"W.** a distance of **75.57 feet** along said Paul lands and meandering with the center line of a small ravine to a point;

Thence, **S.83°05'04"W.** a distance of **381.90 feet** along said Paul lands and meandering with the center line of a small ravine to a point;

Thence, **S.85°31'49"W.** a distance of **188.89 feet** along said Paul lands and meandering with the center line of a small ravine to the point of beginning.

The above described parcel contains **4.28 acres**, more or less, subject to all legal easements and right of ways. All set rebars are 5/8" x 30" rebars with plastic I.D. caps. North is based upon an assumed meridian.

Description was prepared from an actual survey by Bowman Surveying, Stephen M. Bowman, P.S.#7135. April 5, 2006.

APPROVED FOR CLOSURE

*[Signature]* 4/7/2006

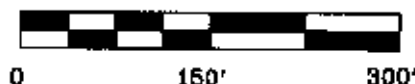
**OFFICE COPY  
NOT RECORDABLE**

EXEMPT FROM  
PLANNING COMMISSION

*[Signature]* 4/7/2006

**SURVEY PLAT FOR FEDERAL NATIONAL MORTGAGE ASSOCIATION**  
**SITUATED IN FRACTIONAL SECTION 15, T-12, R-13, WAYNE TOWNSHIP,**  
**MUSKINGUM COUNTY, OHIO.**

NORTH IS BASED UPON  
 AN ASSUMED MERIDIAN  
 SCALE 1" = 150'

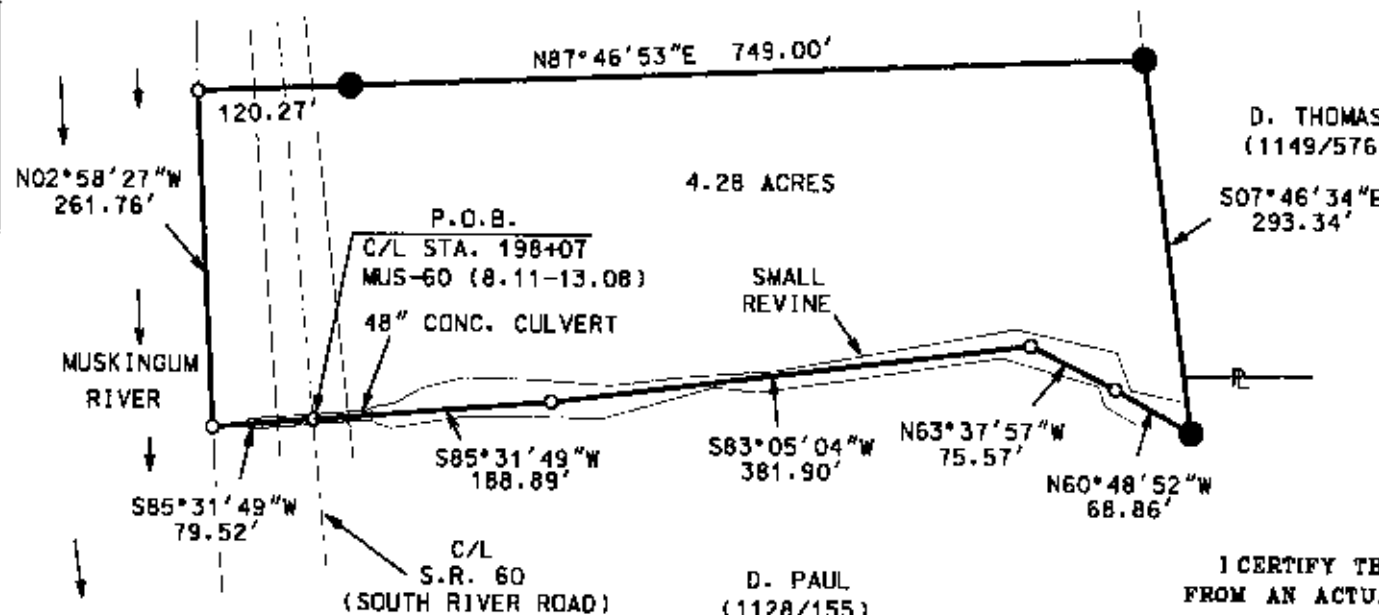


AUDITORS PARCEL

73-33-01-02-000

J. CAVANAUGH  
 (733/103)

D. THOMAS  
 (1149/576)



**LEGEND**

- IRON PIN FOUND
- ⊕ 5/8" X 30" REBAR SET W/ I.D. CAP
- POINT

I CERTIFY THIS DRAWING WAS PREPARED  
 FROM AN ACTUAL SURVEY CONDUCTED

**OFFICE COPY**  
**NOT RECORDABLE**

STEPHEN M. BOWMAN, P.S. #7135

APPROVED FOR CLOSURE

EXEMPT FROM  
 PLANNING COMMISSION

*[Signature]* 4/7/2006

*[Signature]* 4/7/2006

**BOWMAN SURVEYING**

38 N. 4th STR., RM 103  
 ZANESVILLE, OHIO 43701  
 PHONE/FAX 740-454-0496

JOB: M-06112

DATE: 04/05/06