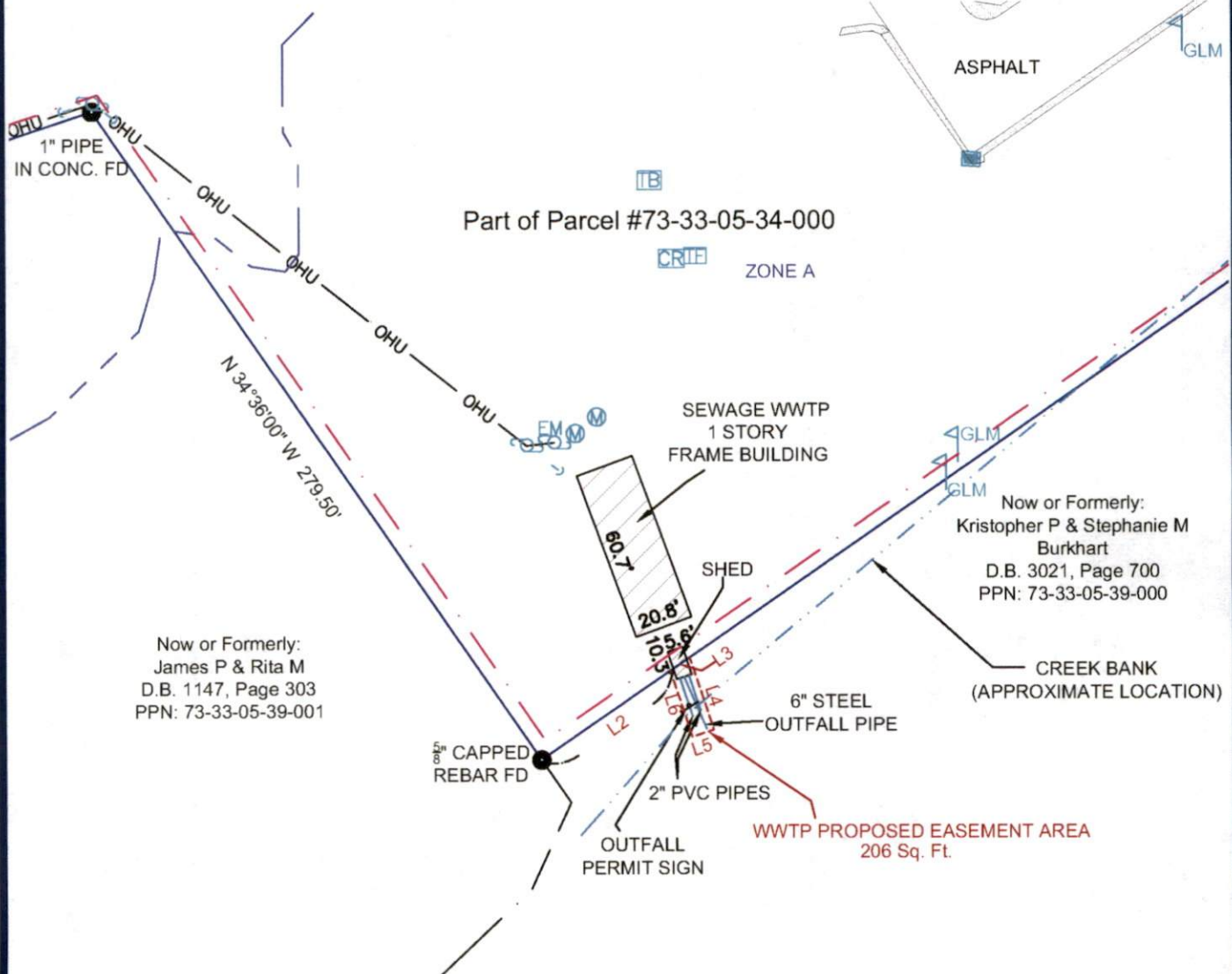


WWTP EASEMENT AREA EXHIBIT

SITUATED IN THE TOWNSHIP OF WAYNE,
COUNTY OF MUSKINGUM, STATE OF OHIO.
BEING A PART OF FRACTIONAL
SECTION 15, TOWNSHIP 12, RANGE 13,

SITE ADDRESS
2200 S RIVER ROAD
ZANESVILLE, OH 43701
MUSKINGUM COUNTY



LINE	BEARING	DISTANCE
L2	N 55°24'00" E	55.45'
L3	N 55°24'00" E	8.33'
L4	S 18°21'57" E	26.97'
L5	S 71°38'03" W	8.00'
L6	N 18°21'57" W	24.64'

DESCRIPTION
APPROVED

By: *[Signature]*

OFFICE COPY
NOT RECORDABLE

Timothy R. Durr
PLS# 7788
In the State of Ohio

