

Biedenbach Engineering, Inc.

3975 East Pike
Zanesville, OH 43701

Telephone (740) 453-4850
Fax (740) 450-1000
E-mail biedenbach@ee.net

CAROL GOFF
AUDITORS PARCEL NUMBER 73-73-36-01-14-000 (PART)

BEING A PART OF THE SOUTHEAST QUARTER OF SECTION 14, TOWNSHIP 12, RANGE 13, OF THE CONGRESS LANDS EAST OF THE SCIOTO RIVER, WAYNE TOWNSHIP, MUSKINGUM COUNTY, OHIO AND BEING FURTHER DESCRIBED AS FOLLOWS:

COMMENCING AT THE NORTHWEST CORNER OF THE SAID SOUTHEAST QUARTER OF SECTION 14;

THENCE WITH THE NORTH LINE OF THE SAID SOUTHEAST QUARTER NORTH 89 DEGREES 56 MINUTES 55 SECONDS EAST 732.02 FEET TO AN EXISTING IRON PIN (5/8 INCH REBAR);

THENCE SOUTH 00 DEGREES 26 MINUTES 38 SECONDS WEST 145.20 FEET ALONG THE EAST LINE OF A TRACT CONVEYED TO C. BAUGHMAN AS RECORDED IN VOLUME 1050, PAGE 528 OF THE MUSKINGUM COUNTY DEED RECORDS, TO A POINT IN THE CENTER OF TOWNSHIP ROAD 449 (ELLERMAN ROAD) PASSING AN EXISTING IRON PIN AT 120.15 FEET;

THENCE ALONG THE CENTER OF ELLERMAN ROAD THE NEXT FOUR COURSES AND DISTANCES:

- 1) SOUTH 57 DEGREES 41 MINUTES 47 SECONDS EAST 199.03 FEET TO A POINT;
- 2) SOUTH 69 DEGREES 14 MINUTES 39 SECONDS EAST 78.27 FEET TO A POINT;
- 3) SOUTH 79 DEGREES 06 MINUTES 45 SECONDS EAST 58.53 FEET TO A POINT;
- 4) SOUTH 82 DEGREES 44 MINUTES 34 SECONDS EAST 74.00 FEET TO A POINT, SAID POINT BEING THE PLACE OF BEGINNING OF THE TRACT HEREIN INTENDED TO BE DESCRIBED;

THENCE CONTINUING WITH THE SAID ROAD THE NEXT 3 COURSES AND DISTANCES:

- 1) SOUTH 82 DEGREES 44 MINUTES 34 SECONDS EAST 209.54 FEET TO A POINT;
- 2) SOUTH 85 DEGREES 04 MINUTES 45 SECONDS EAST 48.20 FEET TO A POINT;
- 3) SOUTH 88 DEGREES 17 MINUTES 03 SECONDS EAST 42.58 FEET TO A POINT;

THENCE LEAVING THE SAID ROAD, SOUTH 00 DEGREES 03 MINUTES 06 SECONDS EAST 113.26 FEET TO AN IRON PIN SET, PASSING AN IRON PIN SET AT 20.00 FEET;

THENCE WITH A CURVE TO THE LEFT HAVING A RADIUS OF 250.00 FEET (CHORD BEARING SOUTH 06 DEGREES 54 MINUTES 12 SECONDS EAST 59.65 FEET) AN ARC LENGTH OF 59.79 FEET TO AN IRON PIN SET;

THENCE SOUTH 13 DEGREES 45 MINUTES 18 SECONDS EAST 161.02 FEET TO AN IRON PIN SET;

THENCE SOUTH 68 DEGREES 11 MINUTES 18 SECONDS WEST 374.70 FEET TO AN EXISTING IRON PIN ON THE EAST LINE OF A 5.072 MORE OR LESS ACRE TRACT;

THENCE WITH THE EAST LINE OF SAID TRACT NORTH 00 DEGREES 26 MINUTES 38 SECONDS EAST 500.00 FEET, PASSING AN EXISTING IRON PIN AT 480.00 FEET, TO THE PLACE OF BEGINNING.

CONTAINING 3.011 MORE OR LESS ACRES, SUBJECT TO EASEMENTS OF ELLERMAN ROAD AND ALL OTHER APPLICABLE EASEMENTS.

ALSO THE FOLLOWING INGRESS AND EGRESS EASEMENT

BEING A PART OF THE SOUTHEAST QUARTER OF SECTION 14, TOWNSHIP 12, RANGE 13, OF THE CONGRESS LANDS EAST OF THE SCIOTO RIVER, WAYNE TOWNSHIP, MUSKINGUM COUNTY, OHIO AND BEING FURTHER DESCRIBED AS FOLLOWS:

COMMENCING AT THE NORTHWEST CORNER OF THE SAID SOUTHEAST QUARTER OF SECTION 14;

THENCE WITH THE NORTH LINE OF THE SAID SOUTHEAST QUARTER NORTH 89 DEGREES 56 MINUTES 55 SECONDS EAST 732.02 FEET TO AN EXISTING IRON PIN (5/8 INCH REBAR);

THENCE SOUTH 00 DEGREES 26 MINUTES 38 SECONDS WEST 145.20 FEET ALONG THE EAST LINE OF A TRACT CONVEYED TO C. BAUGHMAN AS RECORDED IN VOLUME 1050, PAGE 528 OF THE MUSKINGUM COUNTY DEED RECORDS, TO A POINT IN THE CENTER OF TOWNSHIP ROAD 449 (ELLERMAN ROAD) PASSING AN EXISTING IRON PIN AT 120.15 FEET;

Biedenbach Engineering, Inc.

3975 East Pike
Zanesville, OH 43701

Telephone (740) 453-4850
Fax (740) 450-1000
E-mail: biedenbach@ee.net

THENCE ALONG THE CENTER OF ELLERMAN ROAD THE NEXT SEVEN COURSES AND DISTANCES:

- 1) SOUTH 57 DEGREES 41 MINUTES 47 SECONDS EAST 199.03 FEET TO A POINT;
- 2) SOUTH 69 DEGREES 14 MINUTES 39 SECONDS EAST 78.27 FEET TO A POINT;
- 3) SOUTH 79 DEGREES 06 MINUTES 45 SECONDS EAST 58.53 FEET TO A POINT;
- 4) SOUTH 82 DEGREES 44 MINUTES 34 SECONDS EAST 74.00 FEET TO A POINT;
- 5) SOUTH 82 DEGREES 44 MINUTES 34 SECONDS EAST 209.54 FEET TO A POINT;
- 6) SOUTH 85 DEGREES 04 MINUTES 45 SECONDS EAST 48.20 FEET TO A POINT;
- 7) SOUTH 88 DEGREES 17 MINUTES 03 SECONDS EAST 42.58 FEET TO A POINT, SAID POINT BEING THE PLACE OF BEGINNING OF THIS EASEMENT;

THENCE CONTINUING WITH THE SAID ROAD SOUTH 88 DEGREES 17 MINUTES 03 SECONDS EAST 9.74 FEET TO A POINT;

THENCE WITH THE SAID ROAD NORTH 89 DEGREES 56 MINUTES 54 SECONDS EAST 40.26 FEET TO A POINT;

THENCE LEAVING SAID ROAD SOUTH 00 DEGREES 03 MINUTES 06 SECONDS EAST 112.96 FEET TO A POINT;

THENCE WITH A CURVE TO THE LEFT HAVING A RADIUS OF 200.00 FEET (CHORD BEARING SOUTH 06 DEGREES 54 MINUTES 12 SECONDS EAST 47.72 FEET) AN ARC LENGTH OF 47.83 FEET TO A POINT;

THENCE SOUTH 13 DEGREES 45 MINUTES 18 SECONDS EAST 161.02 FEET TO A POINT;

THENCE SOUTH 76 DEGREES 14 MINUTES 42 SECONDS WEST 50.00 FEET TO AN IRON PIN SET;

THENCE NORTH 13 DEGREES 45 MINUTES 18 SECONDS WEST 161.02 FEET TO AN IRON PIN SET;

THENCE WITH A CURVE TO THE RIGHT HAVING A RADIUS OF 250.00 FEET (CHORD BEARING NORTH 06 DEGREES 54 MINUTES 12 SECONDS WEST 59.65 FEET) AN ARC LENGTH OF 59.79 FEET TO AN IRON PIN SET;

THENCE NORTH 00 DEGREES 03 MINUTES 06 SECONDS WEST 113.26 FEET TO THE PLACE OF BEGINNING, PASSING AN IRON PIN SET AT 93.26 FEET.

ALL IRON PINS SET ARE 5/8 INCH X 30 INCH REBAR WITH PLASTIC IDENTIFICATION CAPS (BIEDENBACH PS7923-PS6923).

THE BEARINGS ARE BASED ON THE PREVIOUS SURVEY OF 135.341 MORE OR LESS ACRES CONVEYED TO CAROL GOFF (DEED VOLUME 1144, PAGE 905).

I HEREBY CERTIFY TO THE BEST OF MY KNOWLEDGE AND BELIEF THE SURVEY AND DESCRIPTION TO BE CORRECT AS PREPARED BY ME, THIS 17TH DAY OF JULY 2001.

**OFFICE COPY
NOT RECORDABLE**
MICHAEL D. NICHOLS
REGISTERED SURVEYOR

DESCRIPTION APPROVED
FOR AUDITOR'S TRANSFER
BY MSD

7-29-2001

SURVEY FOR CAROL GOFF

AUDITORS PARCEL NUMBER

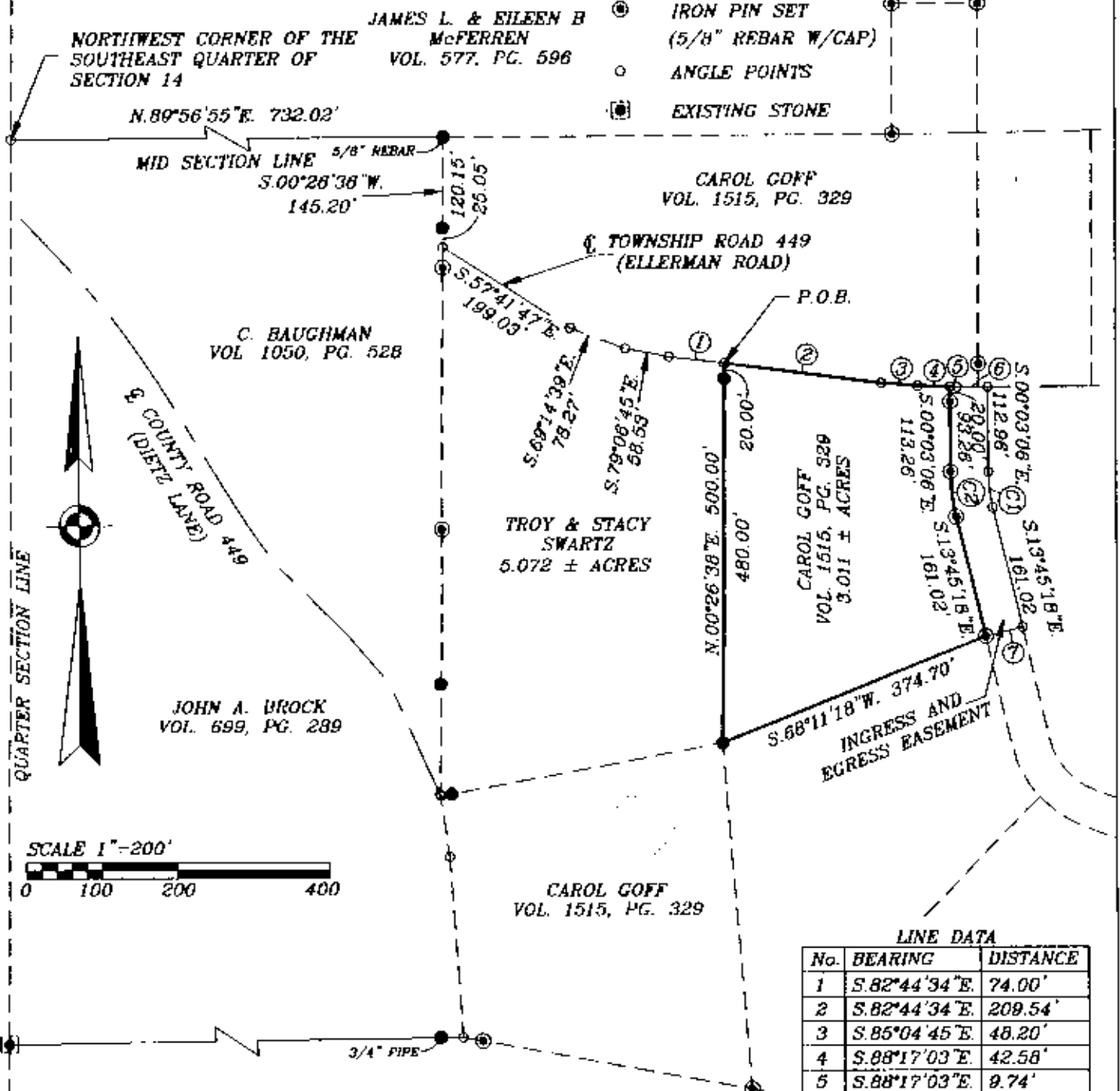
73-73-36-01-14-000 (PART)

BEING A PART OF THE SOUTHEAST QUARTER OF SECTION 14, TOWNSHIP 12, RANGE 13, OF THE CONGRESS LANDS EAST OF THE SCIOTO RIVER, WAYNE TOWNSHIP, MUSKINGUM COUNTY, OHIO.

BEARINGS ARE BASED ON THE PREVIOUS SURVEY OF 135.341 MORE OR LESS ACRES CONVEYED TO CAROL GOFF (DEED VOLUME 1144, PAGE 905).

LEGEND

- EXISTING IRON PIN
- ⊙ IRON PIN SET (5/8" REBAR W/CAP)
- ANGLE POINTS
- ⊕ EXISTING STONE



RESEARCH:

VOL. 1058, PG. 284
VOL. 1023, PG. 441
VOL. 1004, PG. 424
VOL. 1144, PG. 905
VOL. 1023, PG. 441
VOL. 891, PG. 317
VOL. 934, PG. 270
MUSKINGUM CO. TAX MAP

ROBERT ELLERMAN
VOL. 1111, PG. 483

Approved For Transfer
No On-Lot Sewage

Date 7-24-2001

Michael J. Nichols
Zanesville - Muskingum Co.
Health Department

I HEREBY CERTIFY TO THE BEST OF MY
KNOWLEDGE AND BELIEF THE ABOVE PLAT AND
SURVEY TO BE CORRECT AS PREPARED BY ME.
THIS 17th DAY OF JULY, 2001.

**OFFICE COPY
NOT RECORDABLE**

Michael D. Nichols
REGISTERED SURVEYOR #6923

DESCRIPTION APPROVED
FOR AUDITOR'S TRANSFER
BY [Signature]
7-24-2001

LINE DATA

No.	BEARING	DISTANCE
1	S. 82° 44' 34" E.	74.00'
2	S. 82° 44' 34" E.	209.54'
3	S. 85° 04' 45" E.	48.20'
4	S. 88° 17' 03" E.	42.58'
5	S. 88° 17' 03" E.	9.74'
6	N. 89° 56' 54" E.	40.26'
7	S. 76° 14' 42" W.	50.00'

CURVE DATA

No.	BEARING	CHORD	ARC	RADIUS
C1	S. 06° 54' 12" E.	47.72	47.83	200.00
C2	S. 06° 54' 12" E.	59.65	59.79	250.00

BIEDENBACH ENGINEERING, INC.
ZANESVILLE, OHIO
(740) 453-4850

DRAWN BY: AJS	DATE: 07-17-01
SCALE: 1"=200'	CHECKED BY: MDN
JOP NO: 4535	DRAWING NO: D:\4535\4535B3AC