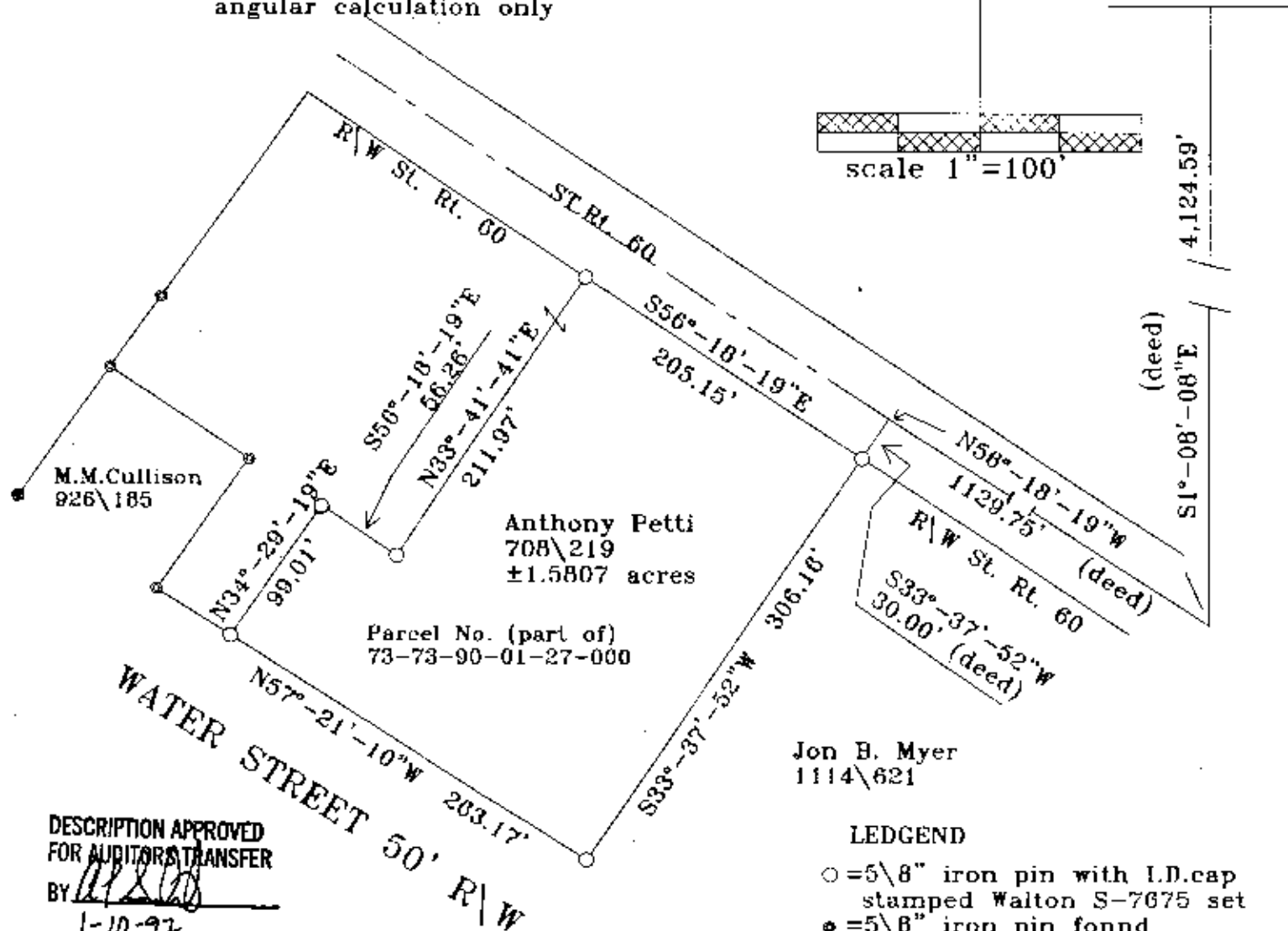
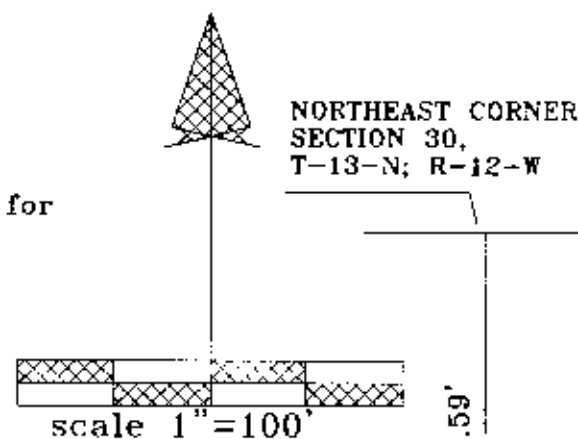


deeds as noted  
county tax maps  
previous surveys of record

bearings based on a previous survey by Timothy H. Linn, dated 8\22\88 and are for angular calculation only



DESCRIPTION APPROVED  
FOR AUDITOR'S TRANSFER

BY 11/2/97  
1-10-97

I hereby certify to the best of my knowledge and belief  
the foregoing plat to be correct as prepared by me  
on this 7th day of January, 1997

**OFFICE COPY**  
**NOT RECORDABLE**

