

### SITUATED IN

The State of Ohio, County of  
Muskingum, City of Zanesville,  
Part of Lot 102 of the  
Town of Putnam (PB A-0, Page 2).

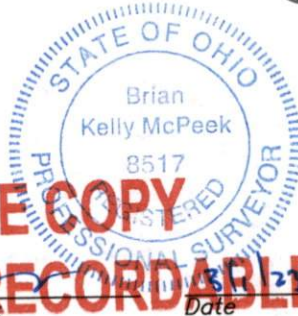
### BASIS OF BEARING

Bearings are based on State Plane  
Grid Coordinates, NAD83, Ohio South,  
per GPS Observation.

### REFERENCES

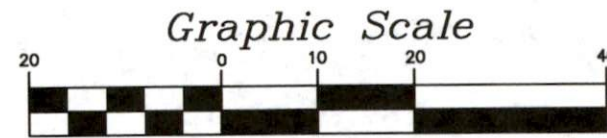
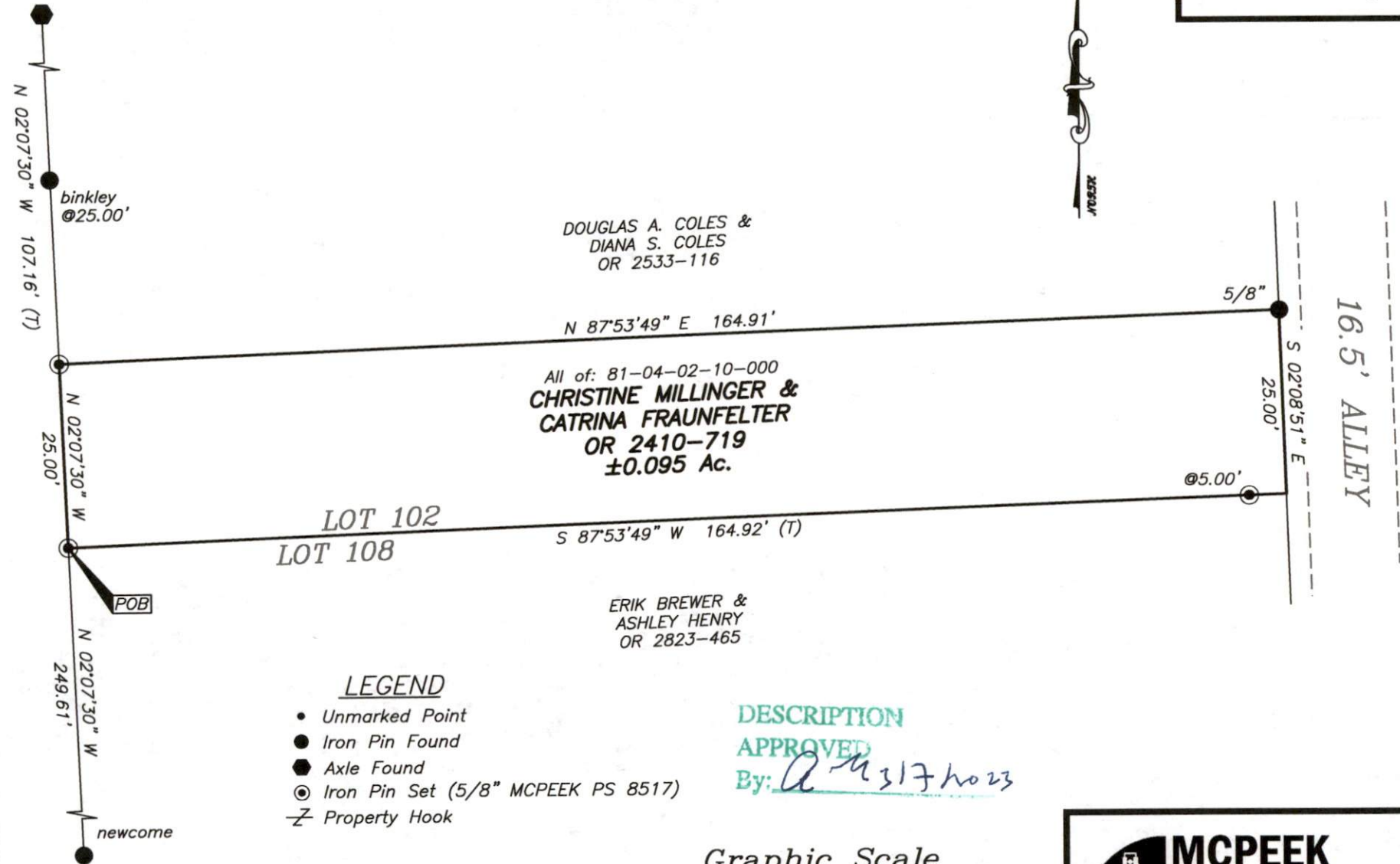
\* As Noted on Plat  
[www.muskingumcountyauditor.org](http://www.muskingumcountyauditor.org)  
[www.mceo.org](http://www.mceo.org)  
<http://recorder.muskingumcounty.org>

PUTNAM AVENUE  
(66' RIGHT OF WAY)



Brian Kelly McPeck  
Reg. Surveyor No. 8517

This plat was prepared by McPeck Land Surveying, LLC  
in accordance with Chapter 4733-37 of the Administrative Code,  
and is intended to be used for the legal transfer of the property  
described and does not intend to describe all or any easements of  
record, nor encroachments unless otherwise intended.



( IN FEET )  
1 inch = 20ft.



[www.mcpeeklandsurveying.com](http://www.mcpeeklandsurveying.com)  
email: [brian@mcpeeklandsurveying.com](mailto:brian@mcpeeklandsurveying.com)  
1705 East Pike, \* Zanesville, Oh 43701 \* 740.704.6073