

## SITUATED IN

The State of Ohio, County of Muskingum  
Town (now City) of Zanesville, part of Lots  
14, 15 & 16 in Square 15.

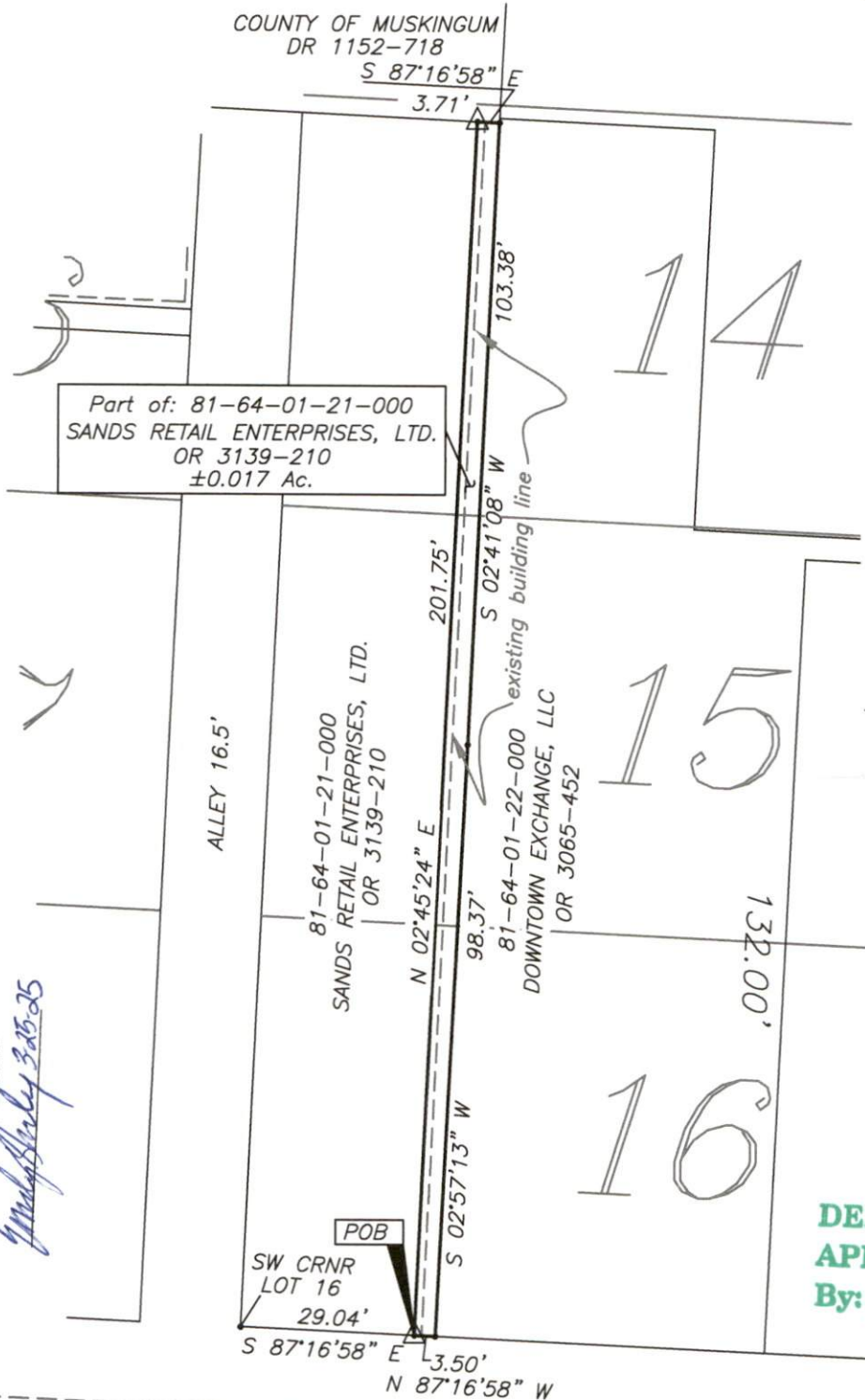
## BASIS OF BEARING

Bearings are based on State Plane Grid Coordinates,  
NAD83, Ohio South, per GPS Observation.

## Split to Adjoin

## REFERENCES

\* As Noted on Plat  
[www.muskingumcountyauditor.org](http://www.muskingumcountyauditor.org)  
[www.mceo.org](http://www.mceo.org)  
<http://recorder.muskingumcounty.org>



## LEGEND

- Point Not Marked
- Iron Pin Found
- Pipe Found w/cap
- ⊠ Stone Found
- Z- Property Hook
- ⊙ Iron Pin Set
- Ex. Fence
- △ PK Nail Set

DESCRIPTION  
APPROVED

By: *[Signature]*

APPROVED BY CITY  
PLANNING COMMISSION  
ZANESVILLE, OHIO  
*[Signature]* 3/25/25

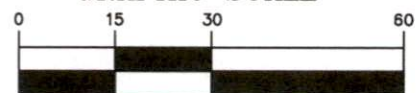
MAIN STREET 66'

centerline of all streets were derived by shooting and splitting top back of curb  
all right of ways were established by offsetting the calculated centerline

## ADJOINER STATEMENT

Not to be used as a separate building  
site or transferred as an independent  
parcel in the future without planning  
commission approval in accordance with  
applicable subdivision regulations.

## GRAPHIC SCALE



( IN FEET )

1 inch = 30 ft.

OFFICE COPY

NOT RECORDABLE

Brian Kelly McPeck  
Reg. Surveyor No. 8517

This plat was prepared by McPeck Land Surveying, LLC  
in accordance with Chapter 4733-37 of the Administrative Code,  
and is intended to be used for the legal transfer of the property  
described and does not intend to describe all or any easements of  
record, nor encroachments unless otherwise intended.



**MCPECK  
LAND  
SURVEYING**

[www.mcpecklandsurveying.com](http://www.mcpecklandsurveying.com)  
email: [brian@mcpecklandsurveying.com](mailto:brian@mcpecklandsurveying.com)  
1705 East Pike, Zanesville, Oh 43701 \* 740.704.6073