

### SITUATED IN

The State of Ohio, County of Muskingum, City of Zanesville, Part of Lots 1 & 2 in Square 10, Western Addition (RP1, Page 4).

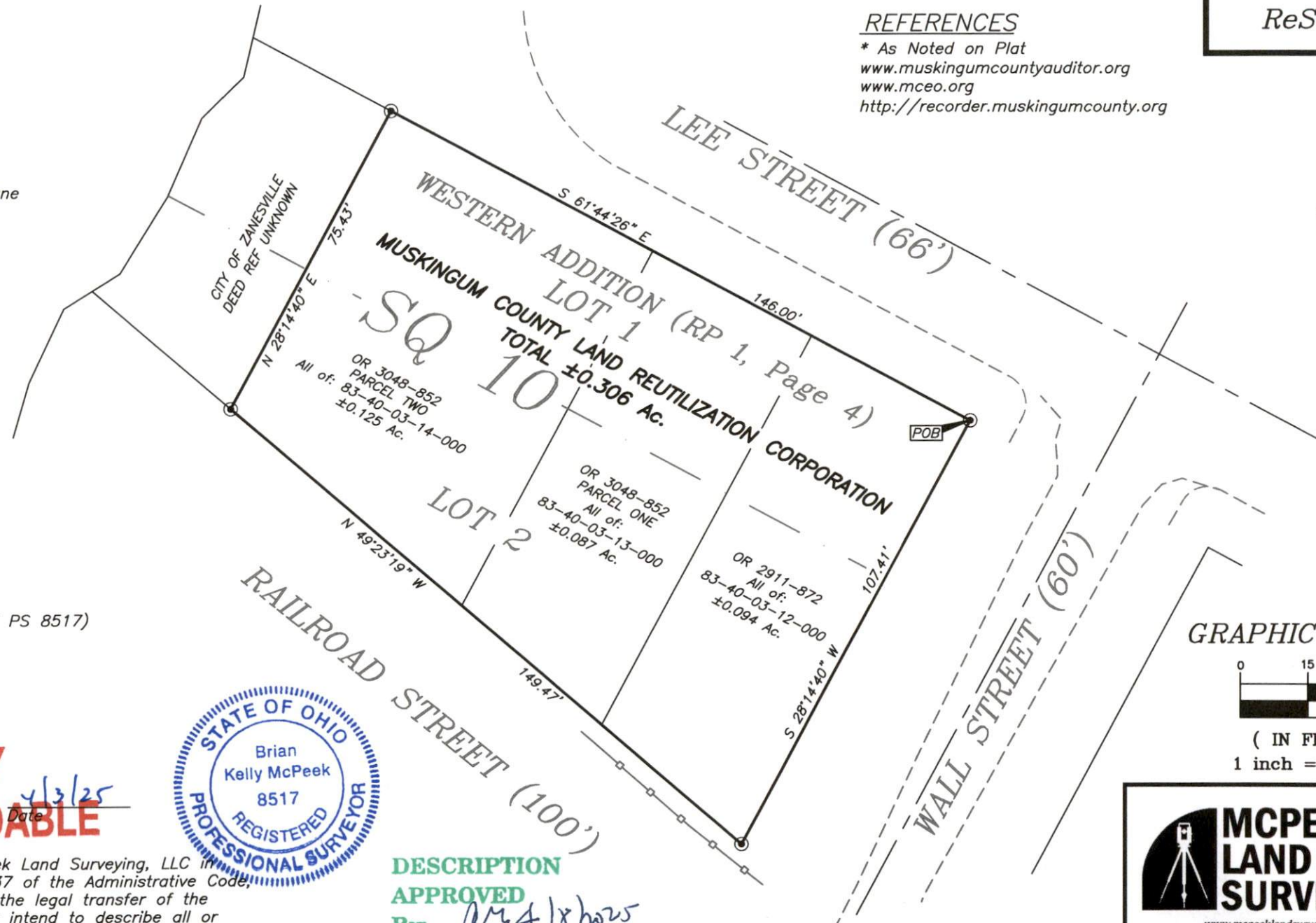
### BASIS OF BEARING

Bearings are based on State Plane Grid Coordinates, NAD83, Ohio South, per GPS Observation.

### REFERENCES

\* As Noted on Plat  
[www.muskingumcountyauditor.org](http://www.muskingumcountyauditor.org)  
[www.mceo.org](http://www.mceo.org)  
<http://recorder.muskingumcounty.org>

ReSurvey



### LEGEND

- Unmarked Point
- Iron Pin Found
- ⊠ Stone Found
- ⊗ PK Nail Set
- ⊙ Iron Pin Set (5/8" MCPEEK PS 8517)
- ⌵ Property Hook
- Axle Found

**OFFICE COPY**  
**NOT RECORDABLE**  
Brian Kelly McPeek  
Reg. Surveyor No. 8517  
Date: 4/3/25



DESCRIPTION  
APPROVED

By: mc4/8/25

This plat was prepared by McPeek Land Surveying, LLC in accordance with Chapter 4733-37 of the Administrative Code, and is intended to be used for the legal transfer of the property described and does not intend to describe all or any easements of record, nor encroachments unless otherwise intended.

**MCPEEK LAND SURVEYING, LLC**  
www.mcpeeklandsurveying.com  
email: brian@mcpeeklandsurveying.com  
1705 East Pike, \* Zanesville, Oh 43701 \* 740.704.6073