

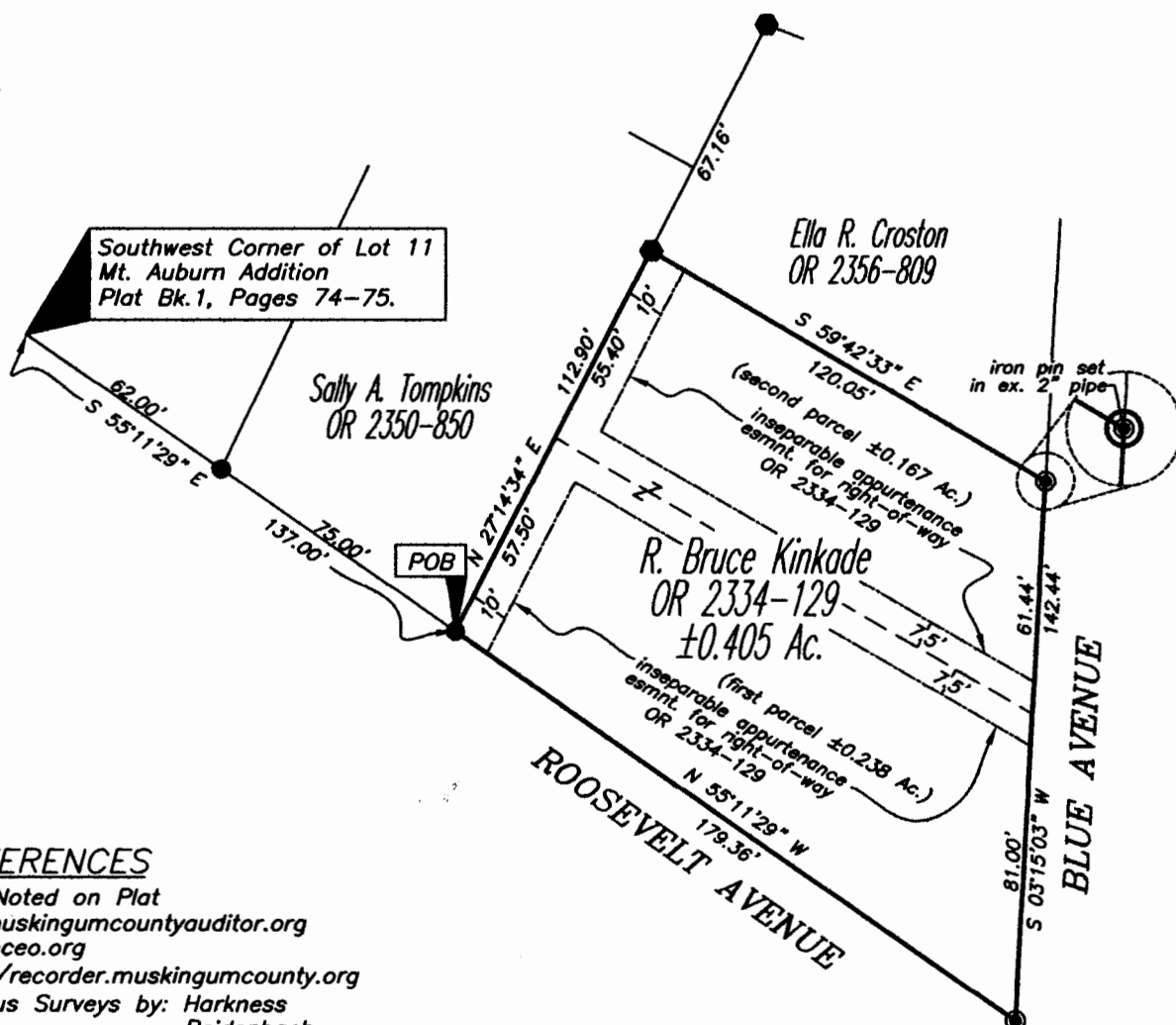
SITUATED IN

The State of Ohio, County of Muskingum
City of Zanesville and being part of Lot 11
of Mt. Auburn Addition, PB 1, Pgs. 74-75.

RESURVEY

BASIS OF BEARING

Bearings are based on State Plane Grid Coordinates,
NAD83, Ohio South, per GPS Observation.



REFERENCES

* As Noted on Plat
www.muskingumcountyauditor.org
www.mceo.org
<http://recorder.muskingumcounty.org>
Previous Surveys by: Harkness
Beidenbach
Finley

DESCRIPTION

APPROVED

By:

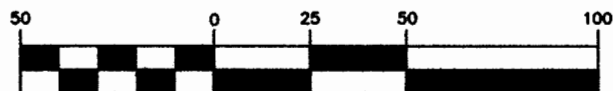
LEGEND

- Iron Pin Set, 5/8" rebar
- Iron Pin Found
- Axle Found
- Z— Property Hook

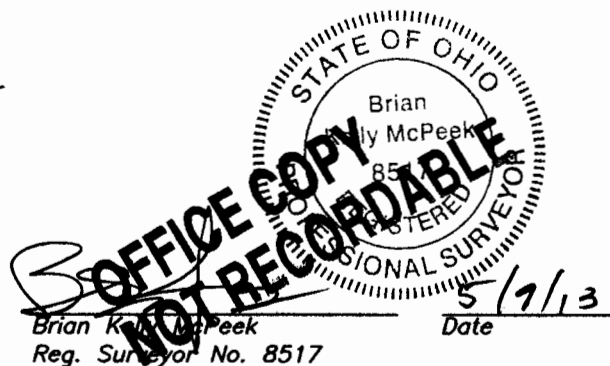
PARCEL NO.

All of: 84-13-04-18-000(0.405 Ac.)

GRAPHIC SCALE



(IN FEET)
1 inch = 50 ft.



**MCPEEK
LAND
SURVEYING**
mcpeeklandsurveying.com
423 Smithfield Ave., Zanesville, Ohio 43701
740.704.6073