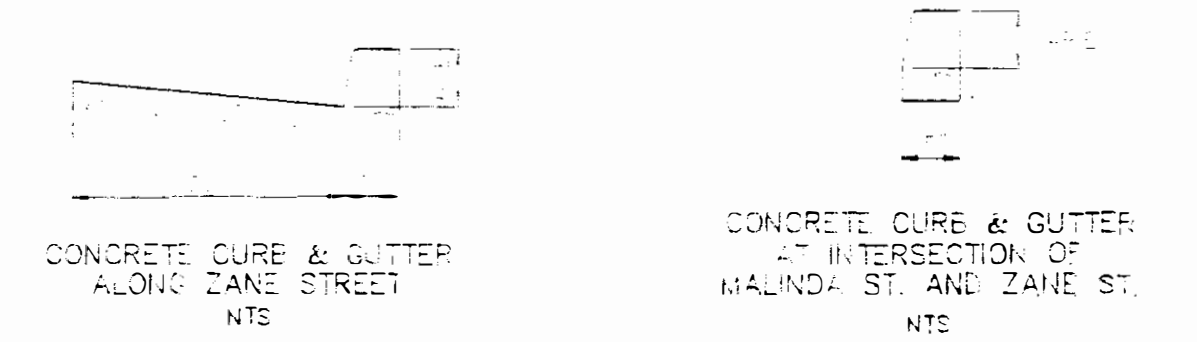
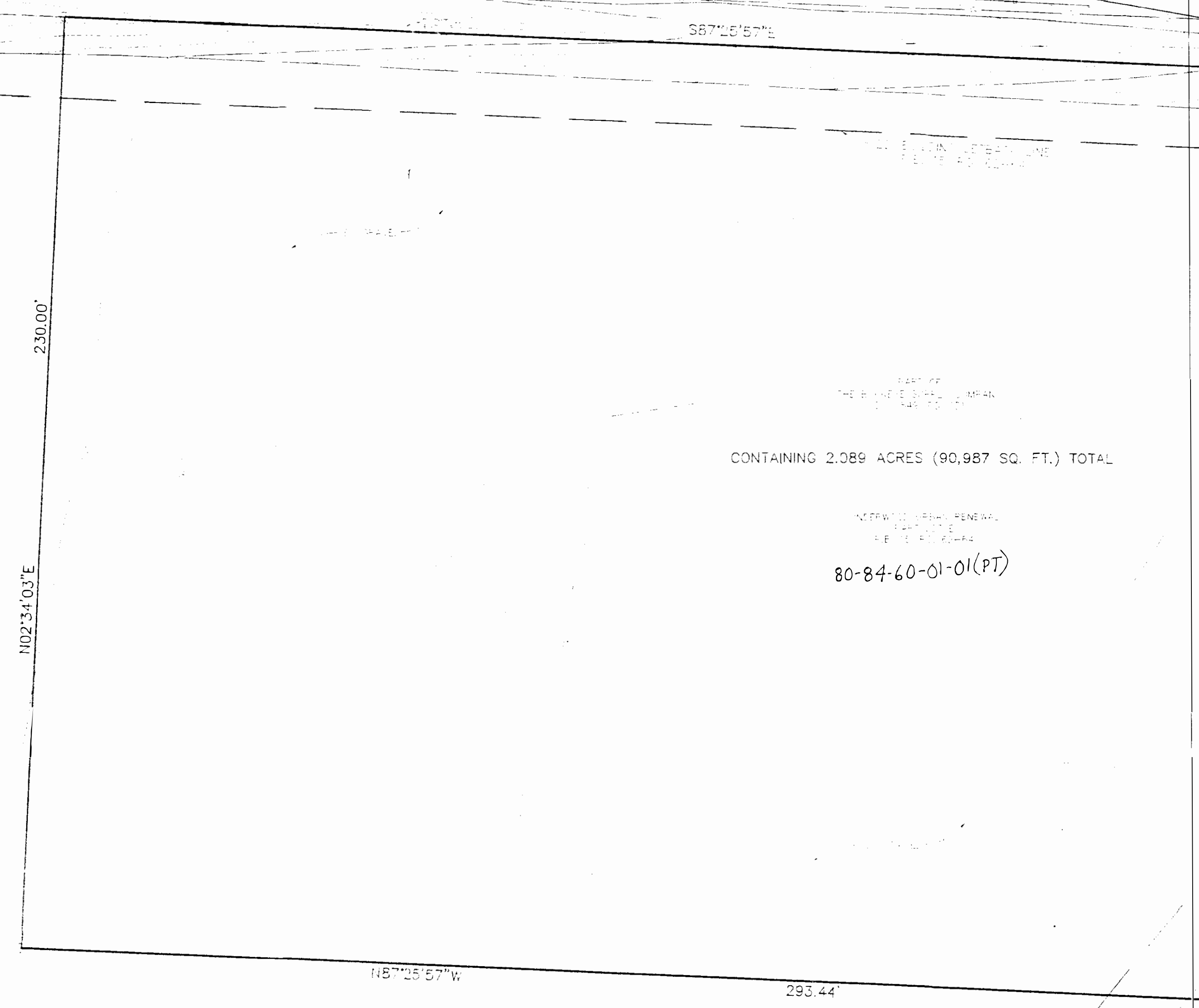


CURE DETAILS



CONCRETE CURE & GUTTER ALONG ZANE STREET NTS

CONCRETE CURE & GUTTER AT INTERSECTION OF MALINDA ST AND ZANE ST. NTS



PART OF THE BUCKLE SURVEY COMPANY S.V. 849, P. 131 UNDERWOOD URBAN REZONAL PART OF E.F.B. 15, P. 62-64

CONTAINING 2.089 ACRES (90,987 SQ. FT.) TOTAL
80-84-60-01(PT)

$\Delta = 11^{\circ}32'32''$
 $R = 989.92'$
 $L = 199.42'$
 $LCH = S45^{\circ}29'54''W$
 $199.05'$



NOTE:

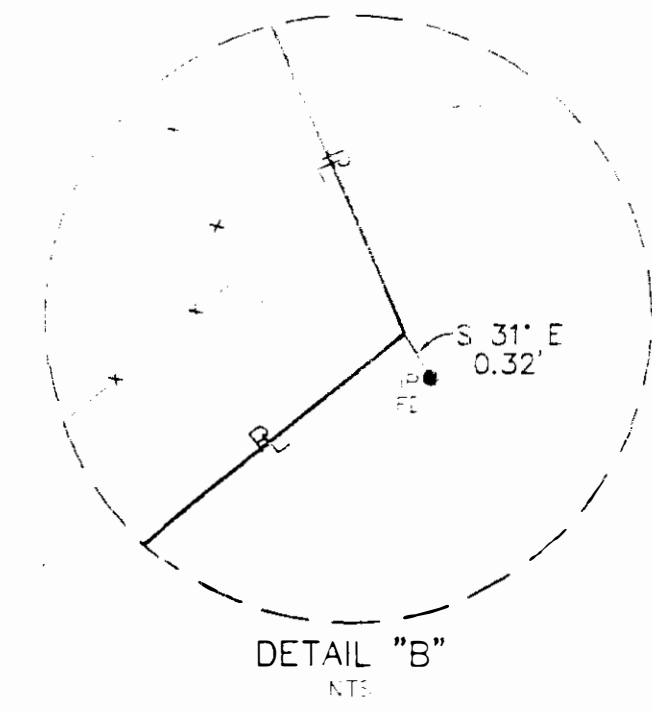
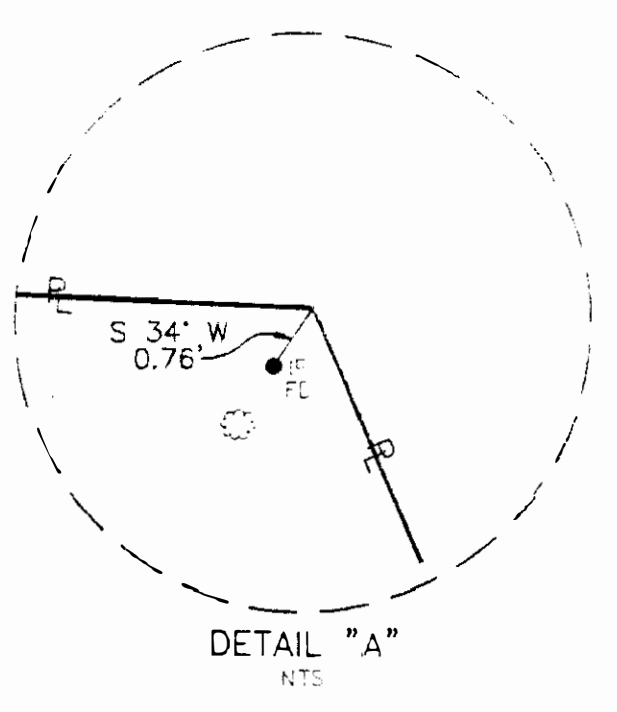
ALL ELEMENTS HAVE BEEN REVIEWED AND FOUND TO BE IN ACCORDANCE WITH THE REQUIREMENTS OF THE CITY OF DAYTON. THE UNDERGROUND UTILITIES WERE LOCATED BY THE SURVEYOR AND SHOWN ON THIS PLAN. THE SURVEYOR HAS NO CONTROL OVER THE LOCATION OF UTILITIES OR THE DEPTH OF THE UTILITIES. THE SURVEYOR HAS NO CONTROL OVER THE LOCATION OF UTILITIES OR THE DEPTH OF THE UTILITIES.

CERTIFICATE

I HEREBY CERTIFY THAT THE WITHIN PLAN UNDER MY DIRECT SUPERVISION AND IS

WOOLPERT
Paul Woolpert
OFFICE COPY
OHIO REGISTERED SURVEYOR NO. 7561
NOT RESPONSIBLE

84-60



LEGEND			
DESCRIPTION	SYMBOL	DESCRIPTION	SYMBOL
UTILITY	---	UTILITY	---
WATER MAIN	---	STORM SEWER	---
SEWER	---	CONCRETE MONUMENT SET	○
CONCRETE MONUMENT FOUND	●	CONCRETE MONUMENT FOUND	●
DECIDUOUS TREES	○	DECIDUOUS TREES	○
FENCE	---	FENCE	---

DATE	REVISIONS	BOUNDARY

