



## **Linn Engineering, Inc.**

*Civil Engineering Consultants*

740-452-7434 • 1-800-991-7434

534 Market Street • P.O. Box 2086 • Zanesville, Ohio 43702-2086

### **Zanesville Board of Education**

**DR 375-250**

**+/- 13.832 ac.**

Situated in the City of Zanesville, County of Muskingum, State of Ohio, bounded and described as follows:

Being part of Woodside Subdivision as the same is designated and delineated on Muskingum County Plat Book 1, Page 296 (Re-plat Book 1, Page 265) and being a part of lands now owned by Zanesville Board of Education as recorded in Muskingum County Deed Record 375, Page 250, and being more particularly described as follows:

Beginning at an iron pipe found on the northeast corner of Lot 6 of Morris Adams Estate Subdivision as the same is designated and delineated on Muskingum County Plat Book 4, Page 127;

thence along the west line of said Woodside Subdivision and the west line of the City of Zanesville corporation line;

North 01 degrees 48 minutes 15 seconds East 1205.35 feet to an iron pipe found on the northeast corner of lands now owned by The Citizens Bank Company (OR 2650-543), passing an iron pin found on the northeast corner of lands now owned by Zandex Health Care Corporation (OR 2362-924) at 137.76 feet;

thence continuing on the west line of said Woodside Subdivision North 01 degrees 21 minutes 45 seconds East 381.96 feet to the northwest corner of said Woodside Subdivision and to a point on the south line of lands now owned by Larry Nolan (OR 1969-668) from which an iron pin found bears North 89 degrees 07 minutes 41 seconds West a distance of 57.33 feet;

thence along the north line of said Woodside Subdivision and the south line of said Nolan and lands now owned by Beth McKee (DR 1094-513) South 89 degrees 07 minutes 41 seconds East 419.80 feet to an axle found on the northeast corner of said Woodside Subdivision, passing an iron pin on Nolan's southeast corner at 34.77 feet;

thence along the east line of said Woodside Subdivision South 01 degrees 44 minutes 37 seconds West 1050.94 feet, passing an iron pin found on the southwest corner of Maple Hill Subdivision as the same is designated and delineated on Muskingum County Plat Book 5, Page 63 at 957.99 feet;

thence through the lands of the Zanesville Board of Education (DR 375-250) the following sixteen courses:

- 1) South 38 degrees 08 minutes 11 seconds West 68.77 feet;

- 2) South 53 degrees 51 minutes 55 seconds West 259.84 feet;
- 3) South 46 degrees 24 minutes 40 seconds West 169.75 feet;
- 4) South 06 degrees 43 minutes 23 seconds East 78.63 feet;
- 5) South 03 degrees 57 minutes 00 seconds East 121.71 feet;
- 6) South 15 degrees 43 minutes 01 seconds East 133.61 feet;
- 7) South 20 degrees 37 minutes 34 seconds East 113.91 feet;
- 8) South 07 degrees 47 minutes 07 seconds West 69.28 feet;
- 9) South 54 degrees 56 minutes 05 seconds West 72.01 feet;
- 10) South 84 degrees 24 minutes 52 seconds West 39.24 feet;
- 11) South 06 degrees 04 minutes 47 seconds West 64.02 feet;
- 12) South 05 degrees 37 minutes 51 seconds West 127.54 feet;
- 13) South 07 degrees 05 minutes 08 seconds East 46.42 feet;
- 14) South 12 degrees 45 minutes 41 seconds West 48.68 feet;
- 15) South 20 degrees 08 minutes 24 seconds East 52.99 feet;
- 16) South 06 degrees 45 minutes 28 seconds West 153.65 feet to a point on the north line of Lot 1 of Edmund J. Brush Subdivision as the same is designated and delineated on Muskingum County Plat Book 1, Page 203 (Re-plat Book 1, Page 208) and the line common to the City of Zanesville and Falls Township, from which an axle found bears North 61 degrees 52 minutes 27 seconds East a distance of 66.09 feet;

thence along said north line of Lot 1 and the line common to the City of Zanesville and Falls Township South 61 degrees 52 minutes 27 seconds West 63.56 feet to the west line of said Woodside Subdivision, from which an iron pin found bears South 61 degrees 52 minutes 27 seconds West a distance of 44.16 feet;

thence along said west line North 02 degrees 16 minutes 29 seconds East 860.25 feet to the place of beginning, containing 13.832 acres, more or less, subject to all legal road right of ways and applicable easements, written or implied.

Bearings are based on Ohio State Plane Coordinate System, NAD 83, South Zone, Grid South, as per GPS observations made on June 26, 2015.

This description is written based on a survey completed May 17, 2016 by Timothy H. Linn, Reg. No. 7113.

**OFFICE COPY**  
**NOT RECORDABLE**  
Timothy H. Linn  
Reg. No. 7113  
Date 5/18/16



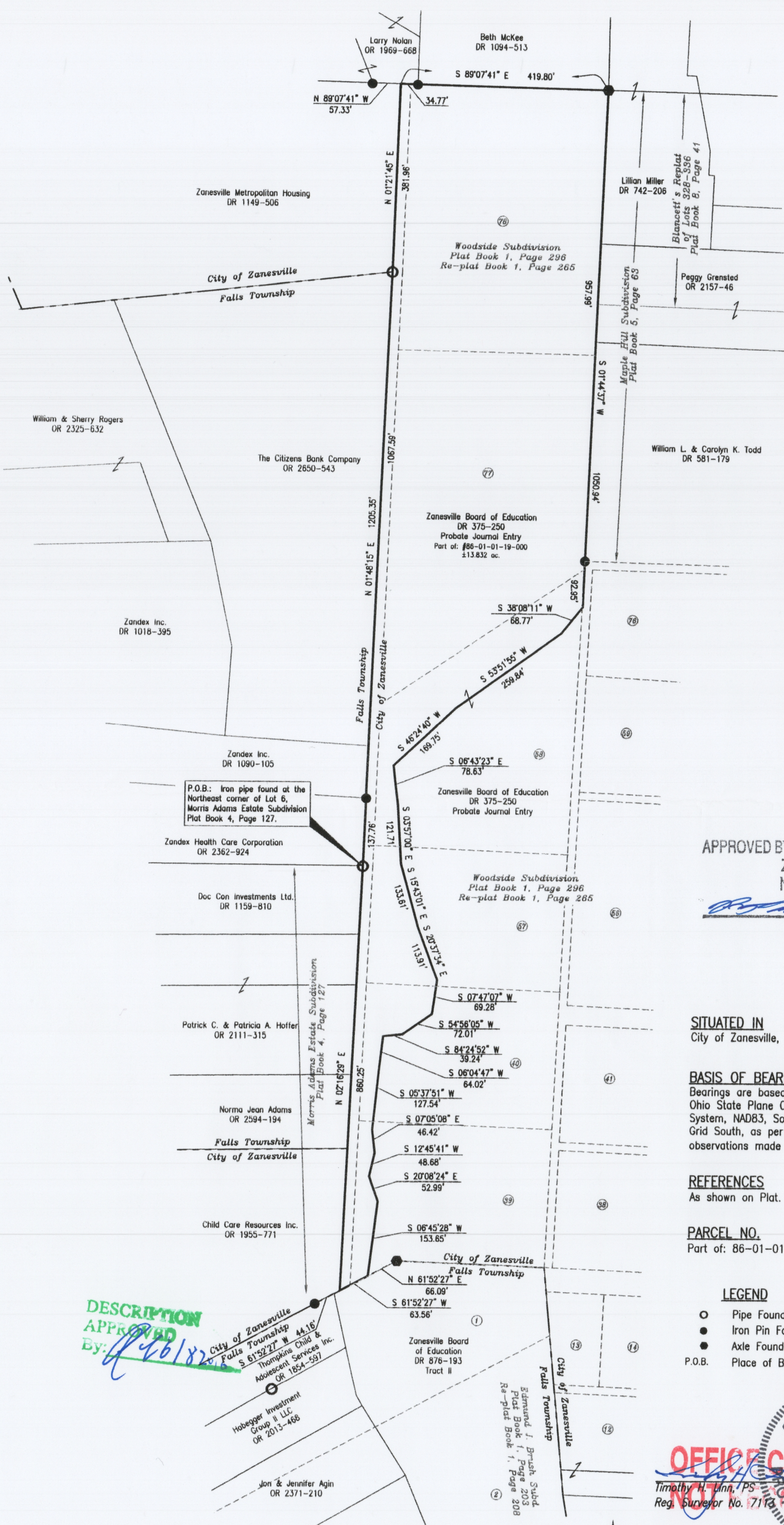
PARCEL NO.:  
Part of: 86-01-01-19-000 (13.832 ac.)

APPROVED BY CITY PLANNING COMMISSION,  
ZANESVILLE, OHIO;  
NO PLAT REQUIRED

8-16-16

**DESCRIPTION**  
**APPROVED**  
By: 8/6/16





APPROVED BY CITY PLANNING COMMISSION,  
ZANESVILLE, OHIO;  
NO PLAT REQUIRED  
*[Signature]* 8-16-16

SITUATED IN  
City of Zanesville, Muskingum County, Ohio.

BASIS OF BEARING  
Bearings are based on the Ohio State Plane Coordinate System, NAD83, South Zone, Grid South, as per GPS observations made 6/26/15.

REFERENCES  
As shown on Plat.

PARCEL NO.  
Part of: 86-01-01-19-000 (±13.832 ac.)

- LEGEND
- Pipe Found
  - Iron Pin Found, 5/8" rebar
  - Axle Found
  - P.O.B. Place of Beginning

DESCRIPTION  
APPROVED  
By: *[Signature]* 8/16/16

