

PLAT OF ALLEY VACATION

SITUATED IN THE STATE OF OHIO, COUNTY OF MUSKINGUM, CITY OF ZANESVILLE, AND BEING THAT PORTION OF A 16' WIDE PUBLIC ALLEY THAT LIES BETWEEN RICH AND BELL STREETS AND BETWEEN LEONARD AND WABASH AVENUES IN THE BROOKLYN TERRACE ADDITION AS RECORDED IN PLAT BOOK 4, PAGE 68 OF THE MUSKINGUM COUNTY RECORDS.

BEARING HEREON ARE BASED ON THOSE SHOWN ON PLAT BOOK 4, PAGE 68.

VACATED AREA TO BE ADDED TO EXISTING PARCELS AS SHOWN BY EXTENDING EXISTING PARCEL BOUNDARIES 8' TO THE CENTERLINE OF VACATED ALLEY AS FOLLOWS:

PARCEL NUMBER	DIMENSIONS	SQ FEET	ACRES	PARCEL NUMBER	DIMENSIONS	SQ FEET	ACRES
86-15-03-02-000	43' X 8' AND 11' X 8'	432 SF	0.010 ACRES	86-15-03-14-000	20' X 8'	160 SF	0.004 ACRES
86-15-03-03-000	80' X 8'	640 SF	0.015 ACRES	86-15-03-15-000	40' X 8'	320 SF	0.007 ACRES
86-15-03-04-000	40' X 8'	320 SF	0.007 ACRES	86-15-03-16-000	75' X 8'	600 SF	0.014 ACRES
86-15-03-05-000	40' X 8'	320 SF	0.007 ACRES	86-15-03-17-000	45' X 8'	360 SF	0.008 ACRES
86-15-03-06-000	29' X 8'	232 SF	0.005 ACRES	86-15-03-18-000	45' X 8'	360 SF	0.008 ACRES
86-15-03-06-001	11' X 8'	88 SF	0.002 ACRES	86-15-03-19-000	45' X 8'	360 SF	0.008 ACRES
86-15-03-07-000	80' X 8'	640 SF	0.015 ACRES	86-15-03-20-000	45' X 8'	360 SF	0.008 ACRES
86-15-03-08-000	40' X 8'	320 SF	0.007 ACRES	86-15-03-21-000	45' X 8'	360 SF	0.008 ACRES
86-15-03-09-000	40' X 8'	320 SF	0.007 ACRES	86-15-03-22-000	45' X 8'	360 SF	0.008 ACRES
86-15-03-10-000	40' X 8'	320 SF	0.007 ACRES	86-15-03-24-000	58' X 8'	464 SF	0.011 ACRES
86-15-03-11-000	20' X 8'	160 SF	0.004 ACRES	86-15-03-27-000	27' X 8'	216 SF	0.005 ACRES

NOTATION
M. J. ...

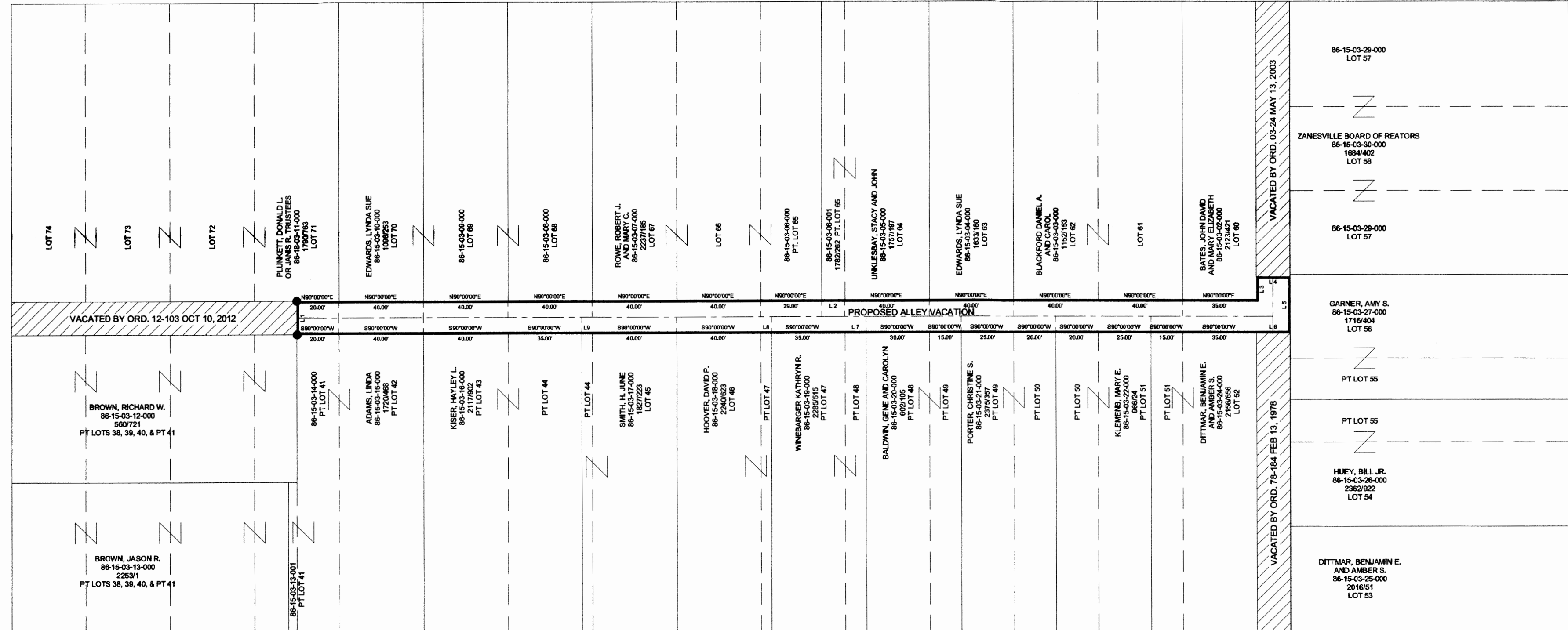


OFFICE OF THE REGISTERED PROFESSIONAL SURVEYOR
 PREPARED BY: *[Signature]*
 APPROVED BY: *[Signature]* PETER DINAN S-5451
 CITY PUBLIC SERVICE DIRECTOR
 APPROVED BY: *[Signature]*
 CITY ENGINEER
 APPROVED BY: _____
 COUNTY ENGINEER
 APPROVED BY: _____
 COUNTY AUDITOR
 APPROVED BY: _____
 COUNTY RECORDER

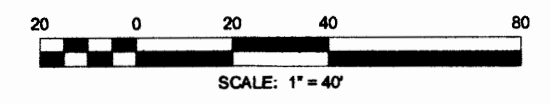
LEONARD AVENUE (50' R/W)

RICH STREET (50' R/W)

BELL STREET (50' R/W)



WABASH AVENUE (50' R/W)



LEGEND
 ● IRON PIN FOUND

LINE	BEARING	DISTANCE	LINE	BEARING	DISTANCE
L1	N00°00'00"E	16.00'	L6	S90°00'00"W	16.00'
L2	N90°00'00"E	11.00'	L7	S90°00'00"W	10.00'
L3	N00°00'00"E	11.00'	L8	S90°00'00"W	5.00'
L4	N90°00'00"E	16.00'	L9	S90°00'00"W	5.00'
L5	S00°00'00"W	27.00'			

CITY OF ZANESVILLE
 ENGINEERING DEPT.
 DATE: JAN 8, 13 SCALE: 1"=40' DRAWN BY: D.K