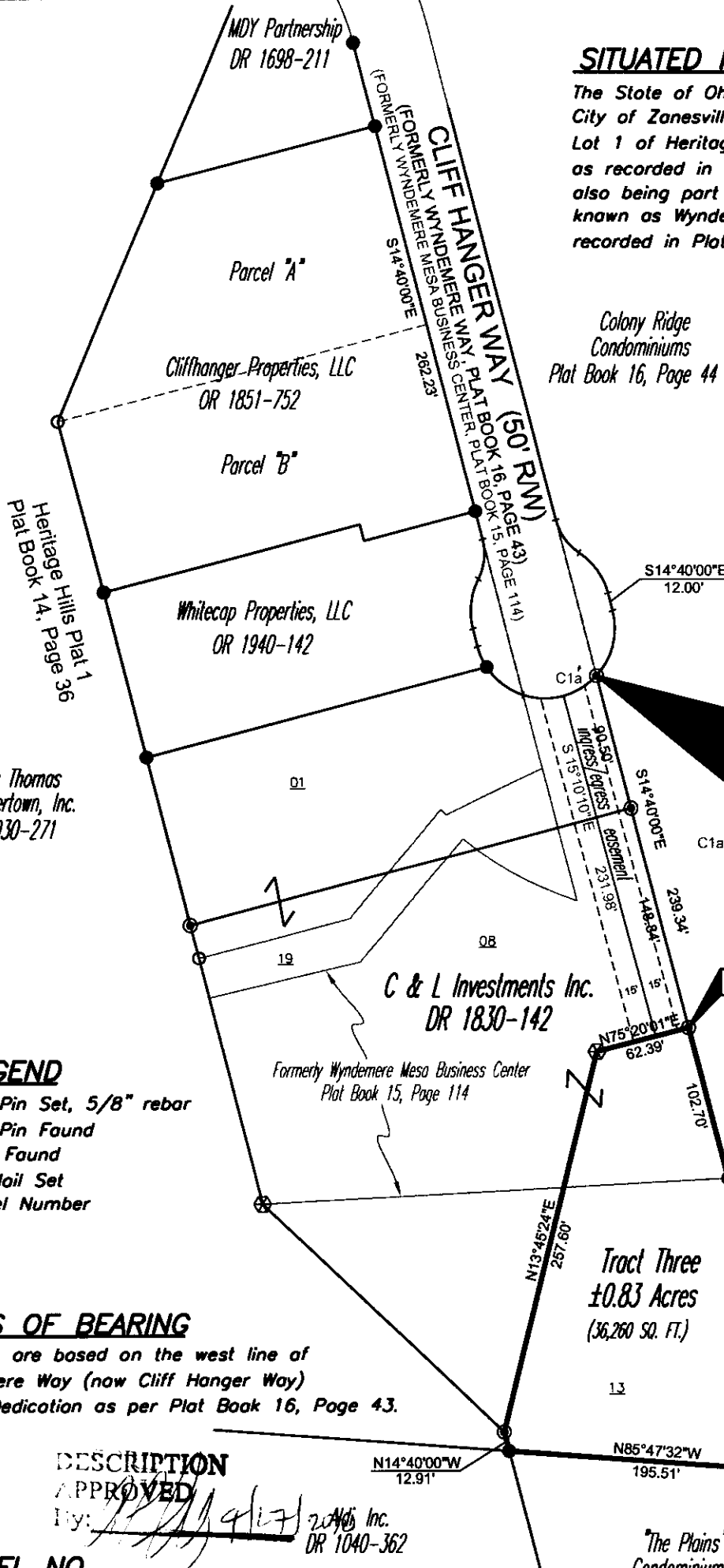


# SITUATED IN

The State of Ohio, County of Muskingum  
City of Zanesville, and being a part of  
Lot 1 of Heritage Hills Plat 1,  
as recorded in Plat Book 14, Page 36,  
also being part of lands now or formerly  
known as Wyndemere Mesa Business Center  
recorded in Plat Book 15, Page 114.

## REFERENCES

OR 1851-752  
OR 1830-140  
OR 1830-142  
Tax Map 86-32  
Plat Book 16, Page 43  
Plat Book 16, Page 44  
Plat Book 14, Page 36  
Plat Book 15, Page 114



Iron Pin Set on cul-de-sac  
(formerly Wyndemere Way)  
as recorded in Plat Book 16, Page 43.

C1a Δ = 32°03'46"  
L = 25.74'  
R = 46.00'  
CH = 25.41'  
BRG = S58°26'26"W

## LEGEND

- Iron Pin Set, 5/8" rebar
- Iron Pin Found
- Pipe Found
- ⊗ PK Nail Set
- 13 Parcel Number

## BASIS OF BEARING

Bearings are based on the west line of  
Wyndemere Way (now Cliff Hanger Way)  
Street Dedication as per Plat Book 16, Page 43.

## DESCRIPTION

APPROVED  
By: [Signature] 2/24/10  
DR 1040-362

## PARCEL NO.

Part of: 86-31-01-08-000 (±0.18 Ac.)  
86-31-01-13-000 (±0.65 Ac.)  
Total (±0.83 Ac.)

Approved for Transfer  
No On-Lot Survey  
Zanesville-Muskingum  
Health Department

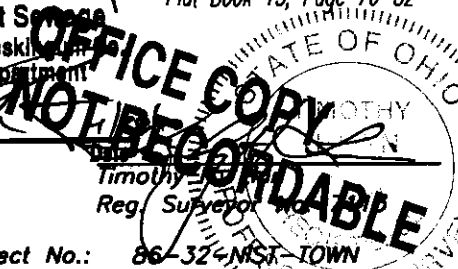
## GRAPHIC SCALE



( IN FEET )  
1 inch = 100 ft.

APPROVED BY CITY PLANNING COMMISSION,  
ZANESVILLE, OHIO;  
NO PLAT REQUIRED

4-28-10



Project No.: 86-32-NST-TOWN



Linn Engineering, Inc. 740-452-7434  
Civil Engineering Consultants  
P.O. Box 2086 Zanesville, Ohio 43702-2086