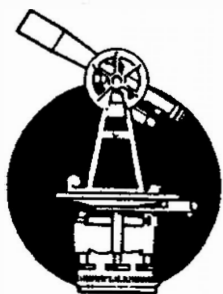


E6-32-01-01-006



L. Peter Dinan & Associates

27 South Sixth Street

P. O. Box 55, Zanesville, Ohio 43701

SURVEYING & MAPPING

Description For Conveyance

4.81 Acres

Part of Parcel #91-86-32-01-01-000

DESCRIPTION APPROVED
FOR AUDITOR'S TRANSFER

BY L. P. Dinan
10-5-90

Situated in the State of Ohio, County of Muskingum, City of Zanesville.

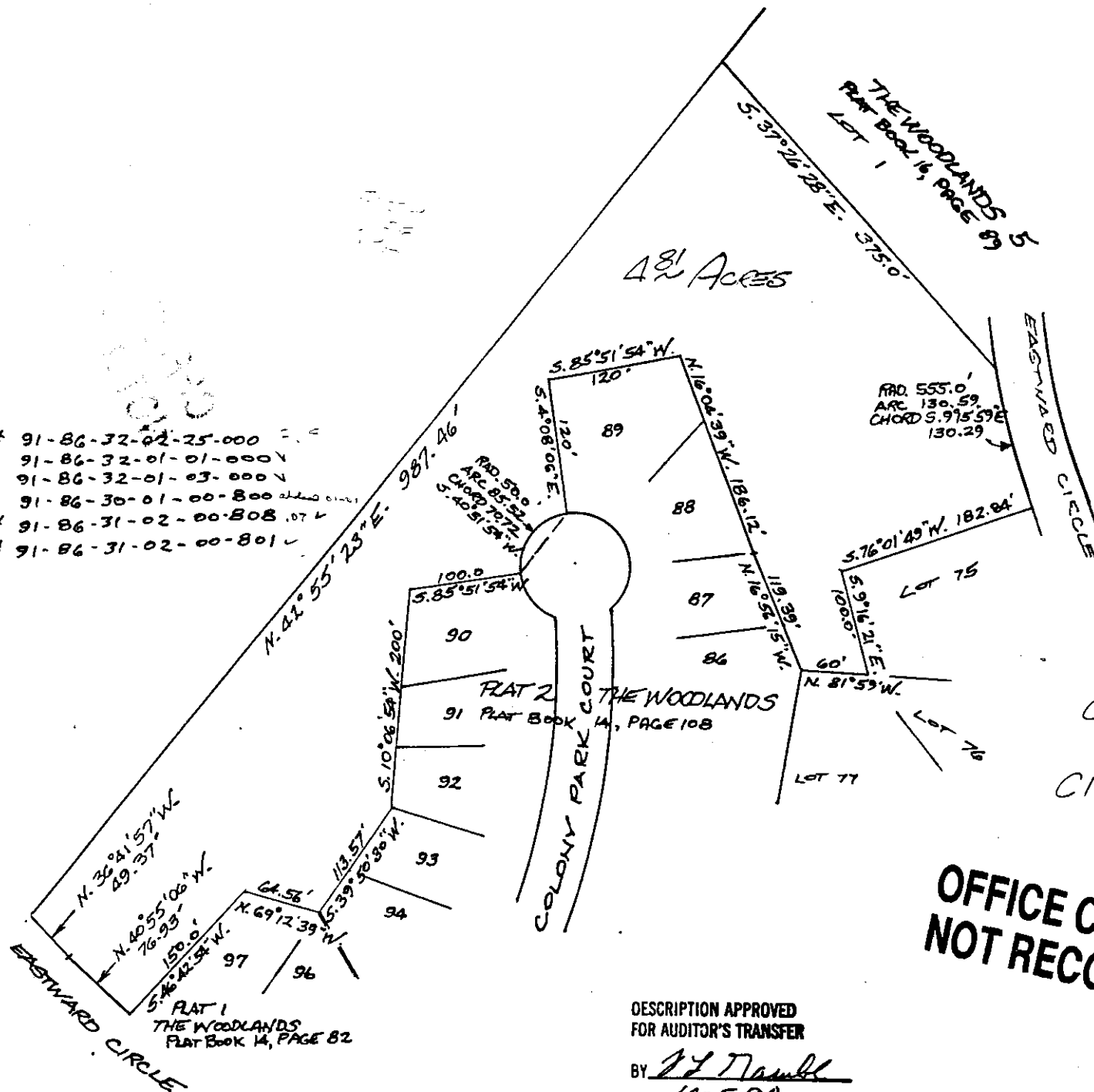
Being a part of Colony North, A Planned Unit Development as Recorded in Plat Book 14, Pages 89, 90, 91, bounded and described as follows:

Beginning at the northeast corner of Lot 75 in Plat 4 The Woodlands; thence along the north line of said Lot 75 south 76 degrees 01 minutes 49 seconds west 182.84 feet to a point; thence south 9 degrees 16 minutes 21 seconds east 100 feet to a point; thence north 81 degrees 59 minutes west 60 feet to a point on the east side of Lot 86 in Plat 2 The Woodlands as recorded in Plat Book 14, Page 108; thence along the lines of said Plat 2 The Woodlands the following seven (7) courses and distances north 16 degrees 56 minutes 15 seconds west 119.39 feet to a point; thence north 16 degrees 04 minutes 39 seconds west 186.12 feet to a point; thence south 85 degrees 51 minutes 54 seconds west 120 feet to a point; thence south 4 degrees 08 minutes 06 seconds east 120 feet to a point on the culdesac at the end of Colony Park Court; thence around said culdesac on a curve to the left having a radius of 50 feet an arc length of 85.52 feet (the chord of which bears south 40 degrees 51 minutes 54 seconds west 70.72 feet) to a point; thence south 85 degrees 51 minutes 54 seconds west 100 feet to a point; thence south 10 degrees 06 minutes 54 seconds west 200 feet to a point; thence south 39 degrees 50 minutes 30 seconds west 113.57 feet to a point; thence along the lines of Plat 1 The Woodlands as recorded in Plat Book 14, Page 82 the following four (4) courses and distances north 69 degrees 12 minutes 39 seconds west 64.56 feet to a point; thence south 46 degrees 42 minutes 54 seconds west 150 feet to a point on the north line of Eastward Circle; thence along said Eastward Circle north 40 degrees 55 minutes 06 seconds west 76.93 feet to a point; thence continuing along Eastward Circle north 36 degrees 41 minutes 57 seconds west 49.37 feet to a point; thence north 42 degrees 55 minutes 23 seconds east 987.46 feet to the southwest corner of Lot 5 in The Woodlands 5 as recorded in Plat Book 16, Page 89; thence along the south line of said Lot 5 south 37 degrees 26 minutes 28 seconds east 375 feet to a point on the west line of Eastward Circle; thence along said west line on a curve to the left having a radius of 555 feet an arc length of 130.59 feet (the chord of which bears south 9 degrees 15 minutes 59 seconds east 130.29 feet) to the place of beginning, containing four and eighty-one hundredths (4.81) acres more or less.

This description written from a survey made by L. Peter Dinan, Registered Surveyor #5451, July 23, 1990.

OFFICE COPY
NOT RECORDABLE

0.59 AC. PART OF PAR* 91-86-32-02-25-000
 2.11 AC. PART OF PAR* 91-86-32-01-01-000
 0.54 AC. PART OF PAR* 91-86-32-01-03-000
 0.99 AC. PART OF PAR* 91-86-30-01-00-800
 0.09 AC. PART OF PAR* 91-86-31-02-00-808
 0.52 AC. PART OF PAR* 91-86-31-02-00-801



4.81 ACRES
 COLONY NORTH
 SIXTH WARD
 CITY OF ZANESVILLE

JULY 13, 1990

OFFICE COPY
 NOT RECORDABLE

DESCRIPTION APPROVED
 FOR AUDITOR'S TRANSFER

BY J. L. Nambell
 10-5-90



L. PETER DINAN
 SURVEYING & MAPPING
 27 South Sixth Street
 Zanesville, Ohio 43701