

Ahlers, Moe and Assoc., Inc.
ENGINEERING AND SURVEYING
360 WEST WATERLOO ST.
P. O. BOX 2
CANAL WINCHESTER, OHIO 43110
(614) 837-1178

86-32-01-08-001
1132 SLOPE BAY

DESCRIPTION APPROVED
for Auditor's transfer

By _____

October 10, 1986
86-1600

Description of Parcel 13-C of Lot 13 of the Replat of Lot 12 & 13 of Plat 2 The Bluffs at Colony North

Situated in the State of Ohio, County of Muskingum, and the City of Zanesville, 6th Ward, and being a part of Lot 13 of the Replat of Lot 12 & 13 of Plat 2 The Bluffs at Colony North as recorded in P.B. , Pg. , of the Muskingum County records, being more particularly described as follows:

Commencing at the Northeast corner of lot 13 and in the westerly r/w line of South Slope Bay;

thence, along said r/w line, along a curve to the left with a radius of 106.48 feet, an arc length of 26.21 feet, which chord bears S 34°57'27" E, 26.14 feet to a point;

thence, continuing along said r/w line, along a curve to the right with a radius of 437.00 feet, an arc length of 15.82 feet, which chord bears S 40°58'20" E, 15.82 feet to a point;

thence, continuing along said r/w line, along a curve to the right with a radius of 437.00 feet, an arc length of 38.17 feet, which chord bears S 37°25'58" E, 38.16 feet to a point, the TRUE point of beginning;

thence, continuing along said r/w line, along a curve to the right with a radius of 437.00 feet, an arc length of 64.77 feet, which chord bears S 30°41'15" E, 64.17 feet to an iron pipe found at the southeast corner of lot 13; (Correct) 71

thence, S 63°31'06" W, leaving said r/w line and along the south line of lot 13, 132.00 feet to a point on the common use area and utility easement line as shown on aforementioned Replat;

thence, N 26°14'03" W, along said line, 48.24 feet to a point;

thence, N 56°12'42" E, leaving said line, on a line intending to be through the air space between parcels 13-B, and 13-C, 128.09 feet to the point of beginning.

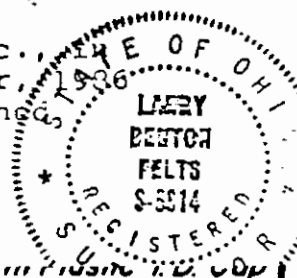
Containing 7373.62 Sq. Ft.(0.1693 ac.) of land

Subject to all legal conditions, easements, and rights of way of record.

This description prepared by Ahlers, Moe and Associates Inc., October 1986 based on an actual survey by same in September, 1986 and is intending to describe said parcel as shown on attached drawing.

Larry B. Felts, P.S. #6814

OFFICE COPY
NOT RECORDABLE



as called, and there are no encroachments either way across any line except as shown.

Larry B. Felts, P.S. #6814

Δ P.K. Nail or Spike

PLAT OF LOT 13
LOT 13 OF REPLAT OF LOT 12 & 13 OF PLAT 2 THE BLUFFS
AT COLONY NORTH



D.B.	Pg.
P.B.	Pg.
Scale:	1" = 30'
Date:	10-1-86
Drawn By:	LOF

AHLERS, MOE & ASSOC., INC.
Engineering & Surveying
360 W. Waterloo St.—P.O. Box 2
Canal Winchester, Ohio 43110 837-1178

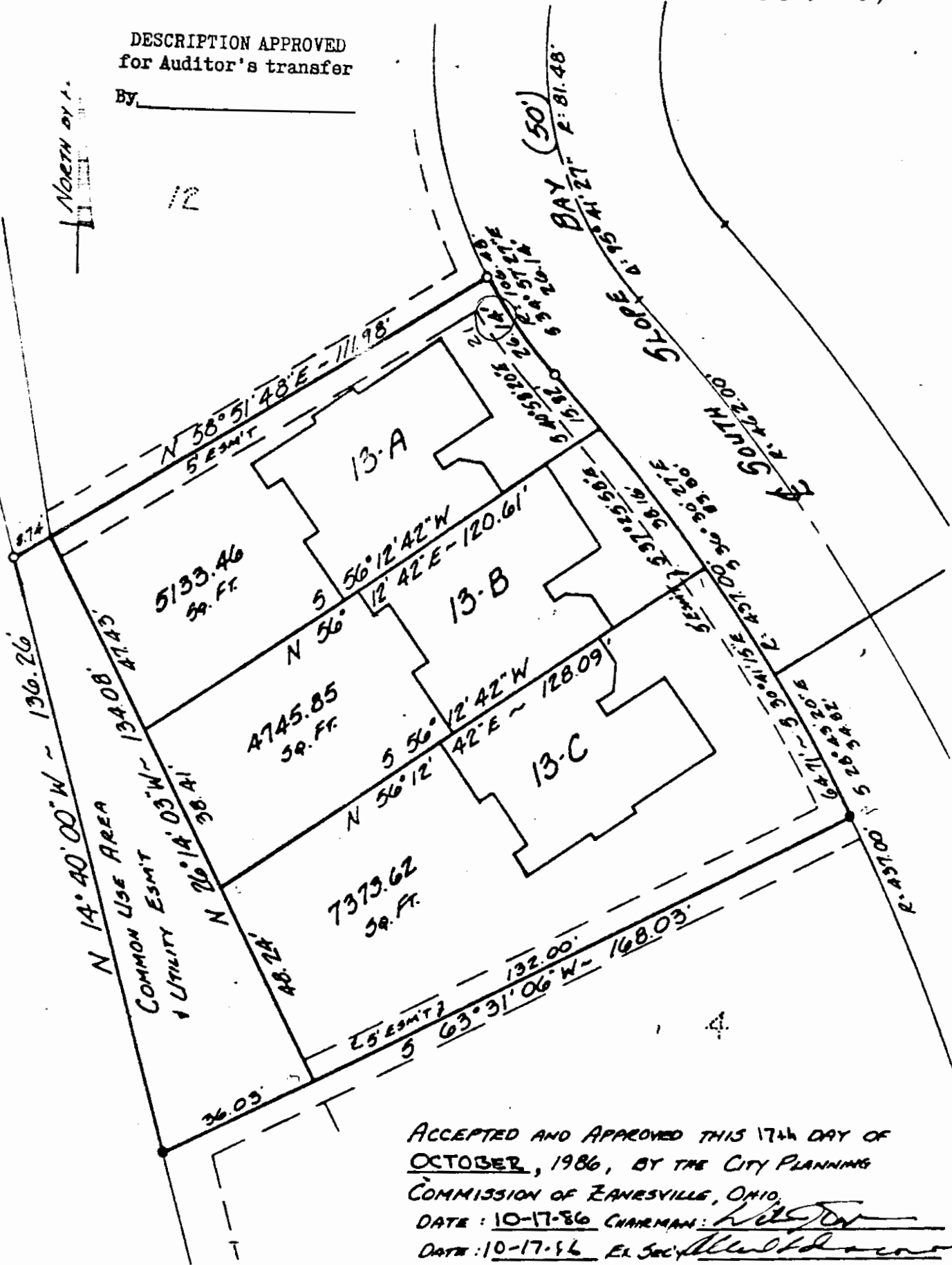
Job No. 86-1600

DESCRIPTION APPROVED
for Auditor's transfer

By _____

North arrow

12



ACCEPTED AND APPROVED THIS 17th DAY OF
OCTOBER, 1986, BY THE CITY PLANNING
COMMISSION OF ZANESVILLE, OHIO.

DATE: 10-17-86 CHAIRMAN: *[Signature]*

DATE: 10-17-86 EX. SEC. *[Signature]*

TO ALL PARTIES INTERESTED IN TITLE TO
PREMISES SURVEYED

I do hereby certify that this is a true and
accurate survey made by me, and the points are
as called, and there are no encroachments or way
across any line except as shown.
Larry B. Felts, P.S. #6814

OFFICE COPY
NOT RECORDABLE

LEGEND

- Iron Pin Found
- Iron Pin Set
With Plastic I.D. Cap
- △ P.K. Nail or Spike

PLAT OF LOT SPLITS

LOT 13 OF REPLAT OF LOT 12 & 13 OF PLAT 2 THE BLUFFS
AT COLONY NORTH

D.B. Pg.

P.B. Pg.

Scale: 1" = 30'

Date: 10-1-86

Drawn By: LCF

AHLERS, MOE & ASSOC., INC.

Engineering & Surveying

360 W. Waterloo St.—P.O. Box 2

Canal Winchester, Ohio 43110

837-1178



Job No. 86-1600