

Ahlers, Moe and Assoc., Inc.

ENGINEERING AND SURVEYING

360 WEST WATERLOO ST.

P. O. BOX 2

CANAL WINCHESTER, OHIO 43110

(614) 837-1178

November 5, 1985
85-1390

Description of a 4.9146 Acre Tract at Colony North for Colony North, Inc.

Situate in the State of Ohio, County of Muskingum, [REDACTED] Zanesville, 6th Ward, part of Quarter Township 1, Township 1 North, Range 8 West, United States Military District; also being part of a tract of land recorded in Deed Book 891, Page 297 and Deed Book 891, Page 305, of the Muskingum County records; being more particularly described as follows:

Commencing at an iron pipe found at the Northwest corner of Plat 2, The Bluffs, P.B. 16, Pg. 1, Muskingum County records, said pipe also being in the East property line of Plat 1, Wyndemere Mesa Business Center, P.B. 15, Pg. 114;

thence, N 14°40'00" W, leaving said Northwest corner, and along said East line, 15.08 feet to an iron pipe set, the TRUE PLACE OF BEGINNING for the herein described 4.9146 acre tract;

thence, N 14°40'00" W, continuing along said East line, 161.91 feet to a point;

thence, leaving said East line, along an arc of a curve to the left having a radius of 46.00 feet, chord bearing N 13°52'23" E, 43.95 feet, an arc length of 45.83 feet to a point;

thence, N 14°40'00" W, along a line a distance of 12.00 feet to a point;

thence, along an arc of a curve to the left having a radius of 46.00 feet, chord bearing N 35°30'06" W, 32.72 feet, an arc length of 33.45 feet to a point;

thence, along an arc of a curve to the right having a radius of 37.00 feet, chord bearing N 35°30'06" W, 26.32 feet, an arc length of 26.91 feet to a point in the East line of the aforementioned Wyndemere Mesa Business Center;

thence, N 14°40'00" W, along said East line and its extension, 618.98 feet to an iron pipe set in the Southerly right of way line of Colony Drive, P.B. 16, Pg. 7,

thence, S 79°31'00" E, along said southerly right of way line, 101.80 feet to an iron pipe set at the point of curvature of said

Ahlers, Moe and Assoc., Inc.

ENGINEERING AND SURVEYING
360 WEST WATERLOO ST.
P. O. BOX 2
CANAL WINCHESTER, OHIO 43110
(614) 837-1178

road;

thence, continuing along said right of way, along a curve to the left having a radius of 185.00 feet, chord bearing S 84°21'52" E, 31.26 feet, an arc length of 31.30 feet to an iron pipe set;

thence, S 38°02'08" E, leaving said right of way, 98.98 feet to an iron pipe set;

thence, S 23°34'50" E, along a line, a distance of 334.97 feet to an iron pipe set;

thence, N 71°47'30" E, along a line, a distance of 80.01 feet to an iron pipe set;

thence, S 33°27'23" E, along a line, a distance of 272.08 feet to an iron pipe set;

thence, S 13°42'56" E, along a line, a distance of 118.34 feet to an iron pipe set;

thence, S 69°19'15" W, along a line 15.00 feet North of and parallel to the North line of Plat 2, The Bluffs, a distance of 380.25 feet to the PLACE OF BEGINNING.

CONTAINING 4.9146 Acres(214,081.24 s.f.) of land. (2.0981 ac. out of 891/305; 2.8165 ac. out of 891/297).

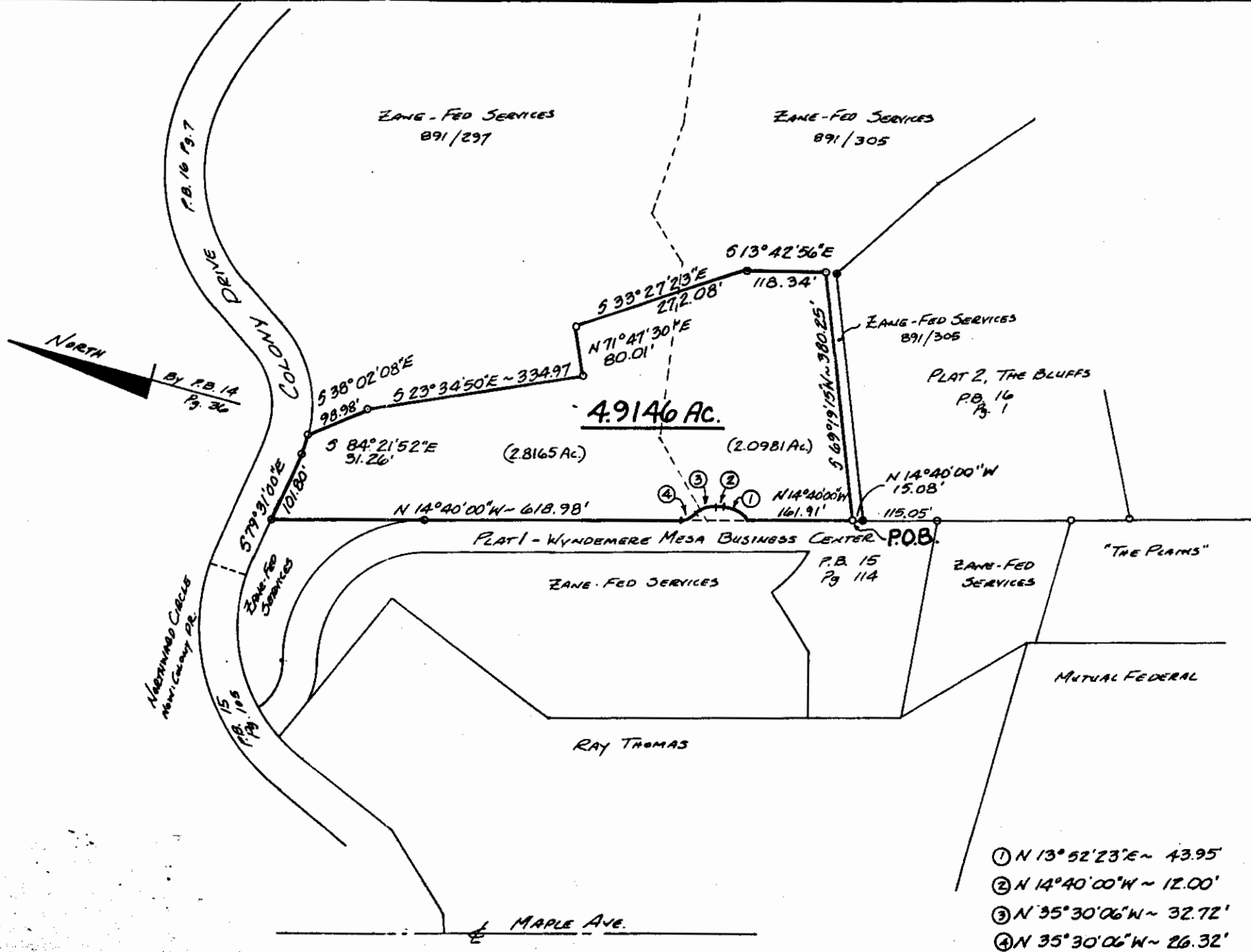
Subject to all legal conditions, easements and rights of way of record.

This description prepared by Ahlers, Moe and Associates, Inc., in November, 1985, based on an actual survey in October, 1985.

Larry B. Felts S. #6814



**OFFICE COPY
NOT RECORDED**



LEGEND

- Iron Pin Found
- Iron Pin, Set With Plastic I.D. Cap
- △ P.K. Nail or Spike

TO ALL PARTIES INTERESTED IN TITLE TO THE PREMISES SURVEYED:
 I do hereby certify that this is a true and accurate survey made by me or under my supervision and that the points are as called, and there are no encroachments or other any line except as shown.

LARRY B. FELTS, P.S. #6814



AHLERS, MOE & ASSOC., INC.
 Engineering & Surveying
 360 W. Waterloo St.—P.O. Box 2
 Canal Winchester, Ohio 43110 837-1178

TO THE PRESENT SURVEYED:
 I do hereby certify that this is a true and accurate survey made by me or under my supervision and that the points are as called, and there are no encroachments or other any line except as shown.

4.9146 AC. CUT OUT FOR COLONY NORTH, INC.

6TH WARD
 MUSKINGUM CO.

1225 BRANDYWINE BLVD.
 LANESVILLE, OHIO 43701

D.B. 891/891 Pg. 297/305
 P.B. Pg.
 Scale: 1" = 200'
 Date: Nov 5, 1985
 Drawn By: LBF