

# SITUATED IN

The State of Ohio, County of Muskingum  
City of Zanesville, Part of Lot 6 Sibley's Sub.,  
1st Qtr. Twp., T1, R8, USML.

SPLIT TO ADJOIN

## BASIS OF BEARING

Bearings are based on State Plane Grid Coordinates,  
NAD83, Ohio South, per GPS Observation.

## REFERENCES

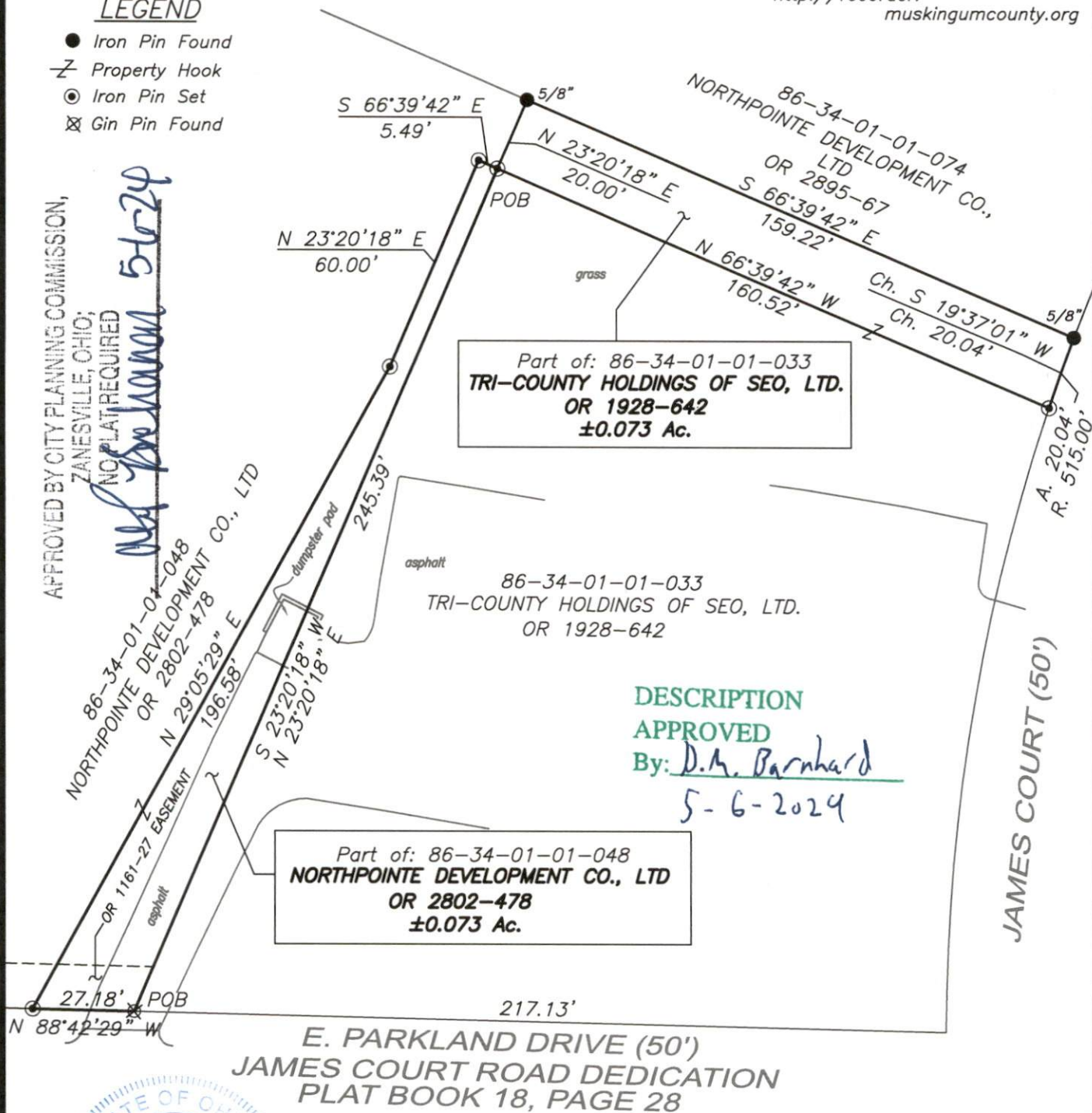
\* As Noted on Plat  
www.muskingumcountyauditor.org  
www.mceo.org  
http://recorder.  
muskingumcounty.org

## LEGEND

- Iron Pin Found
- ⌵ Property Hook
- ⊙ Iron Pin Set
- ⊗ Gin Pin Found

APPROVED BY CITY PLANNING COMMISSION,  
ZANESVILLE, OHIO;  
NO PLAT REQUIRED

5-6-24



DESCRIPTION  
APPROVED

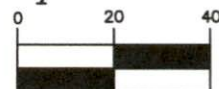
By: D.A. Barnhard  
5-6-2024



## ADJOINER STATEMENT

Not to be used as a separate building  
site or transferred as an independent  
parcel in the future without planning  
commission approval in accordance with  
applicable subdivision regulations.

## Graphic Scale



( IN FEET )

1 inch = 40 ft.

OFFICE COPY

Brian Kelly McPeck  
Reg. Surveyor No. 8517

2/14/24  
Date

This plat was prepared by McPeck Land Surveying, LLC in  
accordance with Chapter 4733-37 of the Administrative Code,  
and is intended to be used for the legal transfer of the property  
described and does not intend to describe all or any easements  
of record, nor encroachments unless otherwise intended.



**MCPECK  
LAND  
SURVEYING**

www.mcpecklandsurveying.com  
email: brian@mcpecklandsurveying.com  
1705 East Pike, \* Zanesville, Oh 43701 \* 740.704.6073