

**Survey for  
Zanesville-Muskingum County Port Authority**

Situate in Quarter Township 1, Township 1, Range 8 in the City of Zanesville, County of Muskingum, State of Ohio, and being a portion of Lot 4 in Sibley's Subdivision and being further described as follows.

*Tract 2*

Commencing for reference at an iron pin found at the northeast corner of Lot 4 in Sibley's Subdivision; thence along the north line of Lot 4 of Sibley's Subdivision North 87 degrees 37 minutes 38 seconds West a distance of 1191.99 feet to an iron pin set, passing an iron pin found (ID cap Linn), at 449.78 feet;

thence South 13 degrees 48 minutes 35 seconds East, a distance of 246.87 feet to an iron pin set and the True Point of Beginning of the tract herein described:

thence South 15 degrees 28 minutes 52 seconds West a distance of 198.69 feet, to an iron pin set;

thence South 76 degrees 11 minutes 25 seconds West, a distance of 202.79 feet to an iron pin set in the easterly line of North Pointe Drive;

thence along the easterly line of said North Pointe Drive, North 13 degrees 48 minutes 35 seconds West, a distance of 173.28 feet to an iron pin set;

thence North 76 degrees 11 minutes 25 seconds East, a distance of 300.00 feet to an iron pin set, and the point of beginning.

The tract as surveyed contains 1.000 acres more or less.

The bearings in the above description are based on the north line of Lot 4 of Sibley's Subdivision being South 87 degrees 37 minutes 38 seconds East.

Iron pins set are 5/8" rebar, 30" long with plastic ID caps Eicher S-8233.

APPROVED FOR CLOSURE

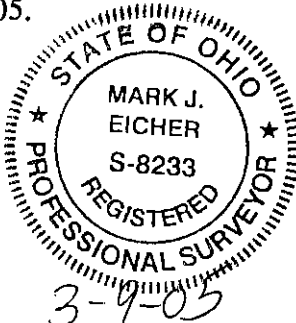
*Alth* 3-14-2005

Subject to all right of ways and easements either written or implied.

This description written from an actual survey made by Mark J. Eicher, Ohio Professional Surveyor #8233, February 26, 2005.

Part of Parcel 86340101001

*Mark J. Eicher*  
Mark J. Eicher, S-8233



EXEMPT FROM  
PLANNING COMMISSION

*Alth* 3-14-2005

DESCRIPTION APPROVED  
FOR AUDITOR'S TRANSFER

BY *A.L. Swinehart*  
3-14-2005 CLS

# PLAT OF SURVEY

FOR ZANESVILLE-MUSKINGUM COUNTY PORT AUTHORITY

SITUATE IN QUARTER TOWNSHIP 1, TOWNSHIP 1, RANGE 8 IN THE  
CITY OF ZANESVILLE, COUNTY OF MUSKINGUM, STATE OF OHIO

NOTE:  
BEARINGS ON THIS PLAT ARE BASED ON THE NORTH LINE OF  
LOT 4 OF SIBLEY'S SUBDIVISION BEING SOUTH 87°37'38" EAST

IRON PINS SET ARE 5/8" REBAR, 30" LONG  
WITH PLASTIC ID CAP EICHER S-8233

APPROVED FOR CLOSURE

*Mark J. Elcher* 3-14-2005

EXEMPT FROM  
PLANNING COMMISSION

*Mark J. Elcher* 3-14-2005

DESCRIPTION APPROVED  
FOR AUDITOR'S TRANSFER

BY *A.L. Swinehart*  
3-14-2005 CLS

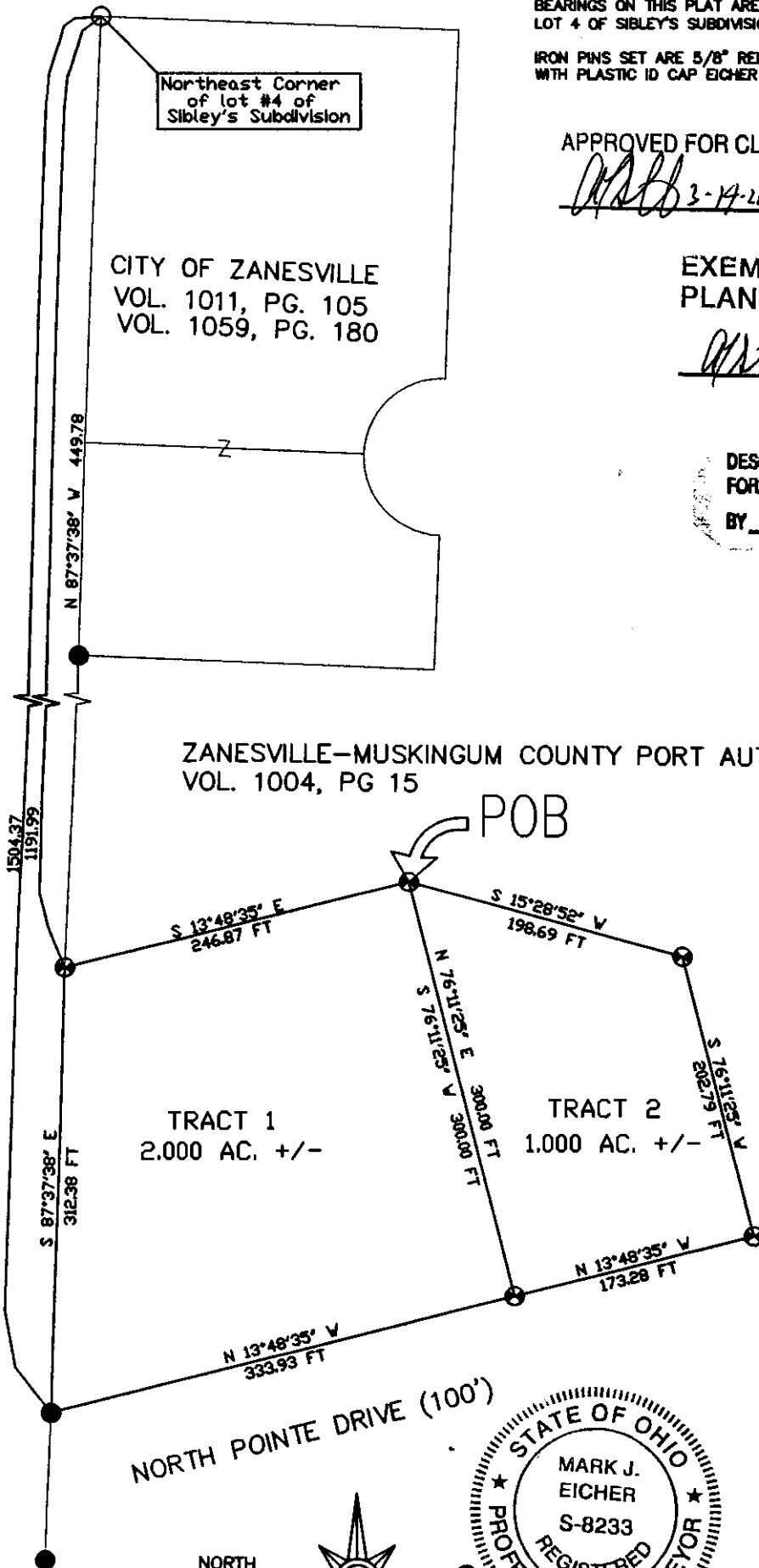
Northeast Corner  
of lot #4 of  
Sibley's Subdivision

CITY OF ZANESVILLE  
VOL. 1011, PG. 105  
VOL. 1059, PG. 180

ZANESVILLE-MUSKINGUM COUNTY PORT AUTHORITY  
VOL. 1004, PG 15

POB

RAY THOMAS LUMBERTOWN, INC  
VOL. 739, PG. 11



REFERENCES  
deeds as noted  
county tax records  
existing monumentation

## LEGEND

- IRON PIN SET  
5/8" X 30" REBAR WITH  
I.D. CAP EICHER S-8233
- IRON PIN FOUND
- IRON PIN FOUND WITH I.D. CAP

NORTH POINTE DRIVE (100')

NORTH

Part of Parcel 86346101001

0 120 240  
SCALE 1" = 120'

Plat prepared by Mark J. Elcher  
Ohio Professional Surveyor S-8233  
based on an actual survey completed  
on the 26th day of February 2005.



EICHER ENGINEERING  
AND CONSULTING

MARK J. EICHER, P.E.  
47 N. 4TH ST., SUITE 804  
ZANESVILLE, OHIO 43701  
PHONE (740) 450-8309  
FAX (740) 450-8310