

STATE OF OHIO
DEPARTMENT OF TRANSPORTATION

RIGHT OF WAY
LEGEND SHEET

MUS-TR136-0.73

SECTION 14, T10N, R13W
HARRISON TOWNSHIP
MUSKINGUM COUNTY

PROJECT DESCRIPTION

REPLACEMENT OF DEFICIENT BRIDGE AS PART OF THE GOVERNOR'S OHIO BRIDGE PARTNERSHIP PROGRAM - THIS LOCATION (SFN 6034659) IS THE DEFICIENT 28' BRIDGE CARRYING BLUE ROCK ROAD OVER A BLUE ROCK CREEK TRIBUTARY. THIS LOCATION IS 0.70 MILES NW OF UNION HILL ROAD.

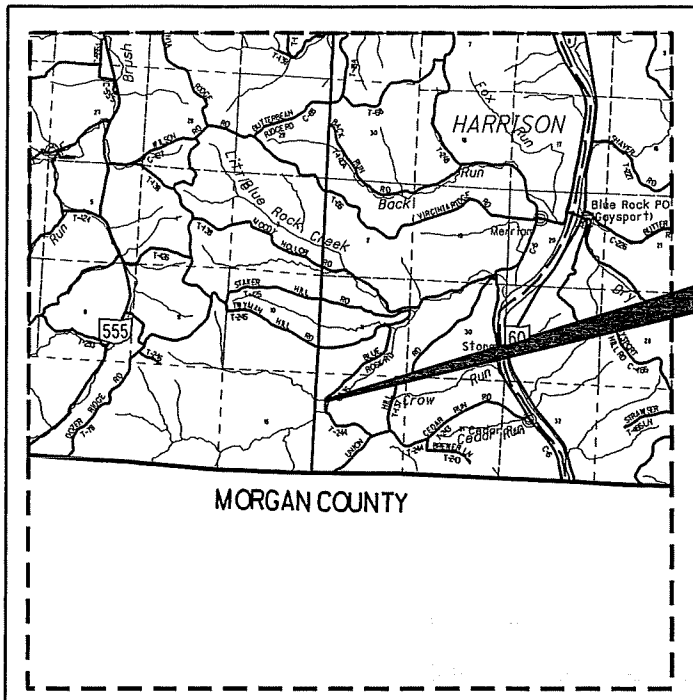
PROJECT CONTROL

NORTH AMERICAN VERTICAL DATUM (NAVD 88)
OHIO STATE PLANE GRID COORDINATE SYSTEM,
SOUTH ZONE, GRID COORDINATES, NAD 83
(CONUS), GEOID 12A (OHIO).

PLAN PREPARED BY:

FIRM NAME: ODOT, DISTRICT 5
PLANS PREPARED BY: CANDY SHOEMAKER
FIELD REVIEW BY: CHARLES PRICE, JR. & CANDY SHOEMAKER
OWNERSHIP VERIFIED BY: CHARLES PRICE, JR.
DATE COMPLETED: 11/09/15

UNDERGROUND UTILITIES
CONTACT BOTH SERVICES
CALL TWO WORKING DAYS
BEFORE YOU DIG
CALL
1-800-362-2764
(TOLL FREE)
OHIO UTILITIES PROTECTION SERVICE
NON-MEMBERS
MUST BE CALLED DIRECTLY
OIL & GAS PRODUCERS PROTECTIVE
SERVICE CALL: 1-800-925-0988



NOTE:
THE LOCATION OF THE UNDERGROUND UTILITIES SHOWN ON THE PLANS ARE OBTAINED FROM THE OWNER OF THE UTILITIES AS REQUIRED BY SECTION 153.64 O.R.C.

INDEX OF SHEETS:

PROPERTY MAP & SUMMARY OF ADDITIONAL RIGHT OF WAY. . . 2
DETAIL SHEETS 3

UTILITY OWNERS

LISTED BELOW ARE ALL UTILITIES LOCATED WITHIN THE PROJECT CONSTRUCTION LIMITS TOGETHER WITH THEIR RESPECTIVE OWNERS:

AT&T OHIO 160 NORTH SIXTH STREET ZANESVILLE, OHIO 43701 ATTN: BARRETT TAMASOVICH 740-454-3552	NATIONAL GAS & OIL CORP. 120 O'NEIL DRIVE HEBRON, OHIO 43025 ATTN: GREG WILSON 740-348-1254	GUERNSEY MUSKINGUM ELECTRIC COOPERATIVE 17 SOUTH LIBERTY STREET NEW CONCORD, OHIO 43762 ATTN: BOB CAMPBELL 740-826-7661
---	---	---

STRUCTURE KEY

- RESIDENTIAL
- COMMERCIAL
- OUT-BUILDING

LEGEND:

SH = STANDARD HIGHWAY EASEMENT
T = TEMPORARY EASEMENT

CONVENTIONAL SYMBOLS

County Line	Edge of Shoulder (Ex)
Township Line	Edge of Shoulder (Pr)
Section Line	Ditch / Creek (Ex)
Corporation Line	Ditch / Creek (Pr)
Fence Line (Ex)	Tree Line (Ex)
Center Line	Ownership Hook Symbol
Right of Way (Ex)	Property Line Symbol
Right of Way (Pr)	Break Line Symbol
Standard Highway Ease.(Ex)	Tree (Pr)
Standard Highway Ease.(Pr)	Tree (Remove)
Temporary Right of Way	Shrub (Remove)
Channel Ease. (Pr)	Evergreen (Ex)
Utility Ease. (Ex)	Stump
Railroad	Evergreen (Remove)
Guardrail (Ex)	Stump (Remove)
Construction Limits	Wetland (Pr)
Edge of Pavement (Ex)	Grass (Pr)
Edge of Pavement (Pr)	Mailbox (Pr)
	Aerial Target
	Light (Ex)
	Telephone Marker (Ex)
	Fire Hydrant (Ex)
	Water Meter (Ex)
	Water Valve (Ex)
	Utility Valve Unknown (Ex)
	Telephone Pole (Ex)
	Power Pole (Ex)
	Light Pole (Ex)

I, Charles W. Price, Jr., P. S. have conducted a survey of the existing conditions for the Ohio Department of Transportation in January, 2015. The results of that survey are contained herein.

Underground utility locations are shown for informational purposes only. Though they are believed to be accurate, their location is as marked on the ground by the utility company per OUPS Confirmation Number A430300497 & OGPups #115593 and those markings subsequently being surveyed as a part of this project.

The horizontal coordinates expressed herein are based on North American Vertical Datum (NAVD 88) Ohio State Plane Grid Coordinate System, South Zone, Grid Coordinates, NAD 83 (Conus), Geoid 12A (Ohio).

As a part of this project I have reestablished the locations of the existing property lines and centerline of existing Right of Way for property takes contained herein.

As a part of this project I have established the proposed property lines, calculated the Gross Take, present roadway occupied (PRO), Net Take and Net Residue; as well as prepared the legal descriptions necessary to acquire the parcels as shown herein.

As a part of this work I have set monuments at the proposed property corners, and other points shown herein. The iron pins and caps will be 3/4" x 30" rebar with aluminum cap stamped "Odor R/W District 5". All of my work contained herein was conducted in accordance with Ohio Administrative Code 4733-37 commonly known as "A Minimum Standards for Boundary Surveys in the State of Ohio" unless so noted.

The words I and my as used herein are to mean that either myself or someone working under my direct supervision.

Charles W. Price, Jr., Professional Land Surveyor # 7825

Date: 11/09/15

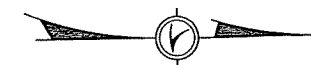
SURVEYORS SEAL

SIGNED:
DATE: 11/09/15

P:\MUS\98581\TR136-0.73\DESIGN\RIGHT_OF_WAY\PLAN_SHEETS\98581_TR136-0.73.dgn 11/09/15

FEDERAL PROJECT NO. X
PID NO. 98581
RAILROAD INVOLVEMENT NONE
RIGHT OF WAY LEGEND SHEET
MUS-TR136-0.73
1/3

SECTION 14, T10N, R13W
HARRISON TOWNSHIP
MUSKINGUM COUNTY



0 10 20
HORIZONTAL
SCALE IN FEET

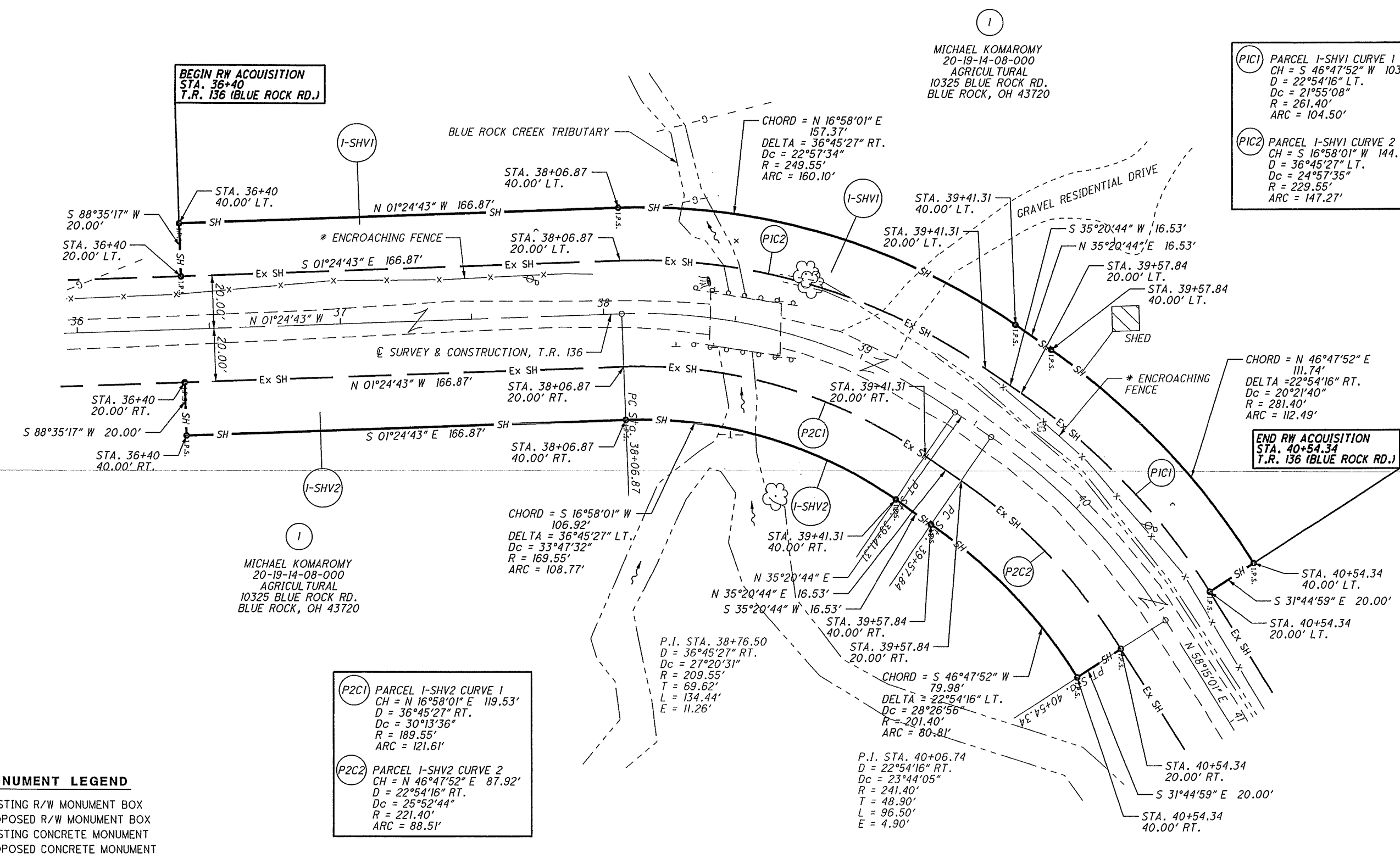
CALCULATED
C.S.
CHECKED
C.P.

98581

RIGHT OF WAY DETAIL SHEET
STA. 36+00 TO STA. 41+00

MUS-TR136-0.73

3 / 3



(PIC1) PARCEL 1-SHV1 CURVE 1
CH = S 46°47'52" W 103.80'
D = 22°54'16" RT.
Dc = 21°55'08"
R = 261.40'
ARC = 104.50'

(PIC2) PARCEL 1-SHV1 CURVE 2
CH = S 16°58'01" W 144.75'
D = 36°45'27" LT.
Dc = 24°57'35"
R = 229.55'
ARC = 147.27'

CHORD = N 46°47'52" E
111.74'
DELTA = 22°54'16" RT.
Dc = 20°21'40"
R = 281.40'
ARC = 112.49'

(P2C1) PARCEL 1-SHV2 CURVE 1
CH = N 16°58'01" E 119.53'
D = 36°45'27" RT.
Dc = 30°13'36"
R = 189.55'
ARC = 121.61'

(P2C2) PARCEL 1-SHV2 CURVE 2
CH = N 46°47'52" E 87.92'
D = 22°54'16" RT.
Dc = 25°52'44"
R = 221.40'
ARC = 88.51'

- MONUMENT LEGEND**
- ▭ EXISTING R/W MONUMENT BOX
 - ▭ PROPOSED R/W MONUMENT BOX
 - EXISTING CONCRETE MONUMENT
 - PROPOSED CONCRETE MONUMENT
 - ⊙ RAILROAD SPIKE FOUND
 - ⊙ RAILROAD SPIKE SET
 - ⊙ I.P.F. IRON PIN FOUND
 - ⊙ I.P.F. IRON PIN FOUND W/ ID CAP
 - ⊙ I.P.S. IRON PIN SET W/ ID CAP
 - ⊙ I.P.F. IRON PIPE FOUND
 - ⊙ I.P.S. IRON PIPE SET
 - ⊙ P.K. NAIL FOUND
 - ⊙ P.K. NAIL SET

NOTE:
ALL STATIONS AND OFFSETS ARE FROM THE
CENTERLINE OF SURVEY AND CONSTRUCTION,
T.R. 136 (BLUE ROCK RD.) UNLESS OTHERWISE STATED.

NOTE:
THE CO. RD. AND TWP RD. RIGHT OF WAY DETERMINED
FROM THE MUSKINGUM COUNTY ENGINEERS OFFICE
MUSKINGUM COUNTY, OHIO

REV	DATE	DESCRIPTION

COMPLETION DATE: 11/09/15

P:\MUS\98581\TR136-3.68\DESIGN\RIGHT_OF_WAY\PLAN_SHEETS\98581_TR136_RD001.dgn 11/09/15