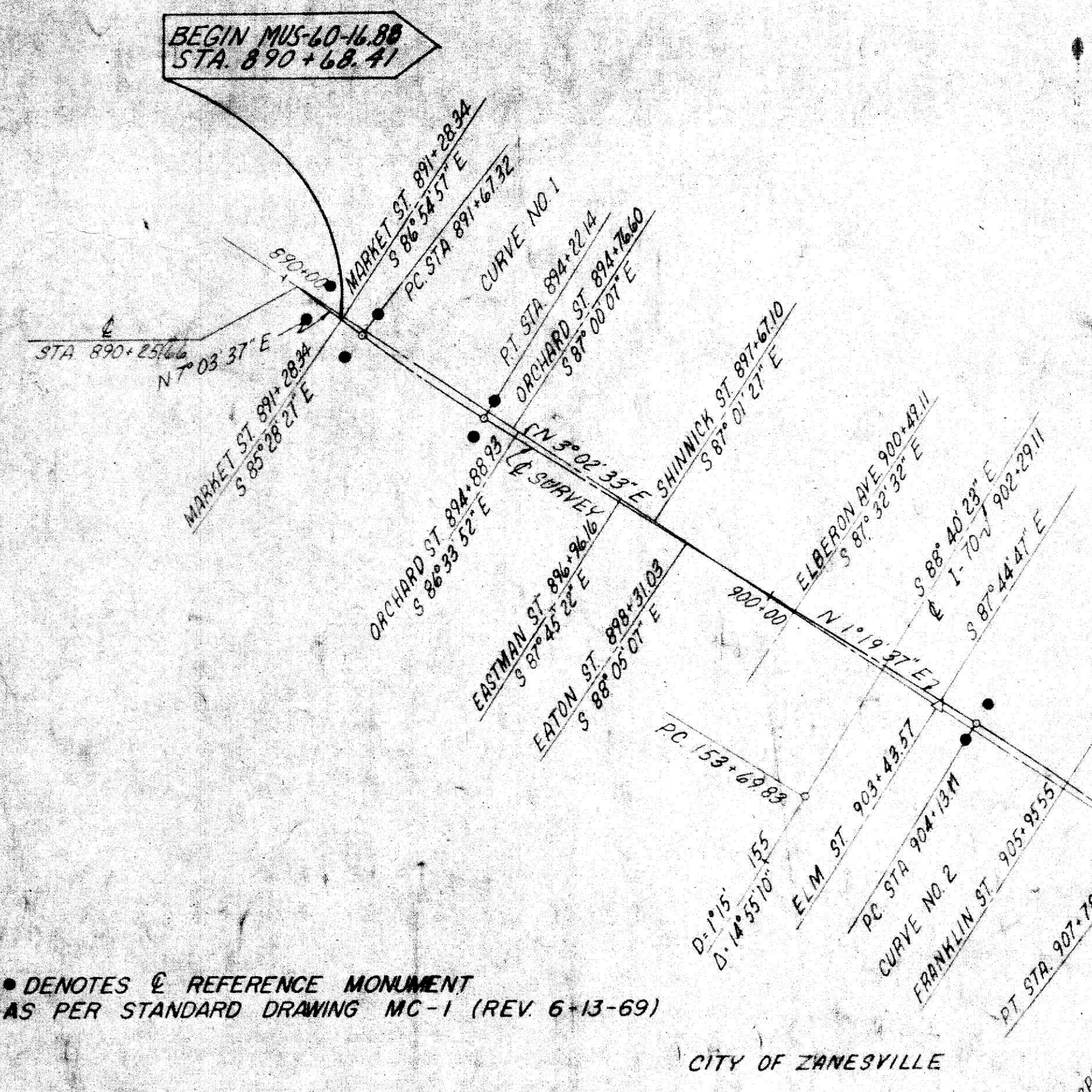
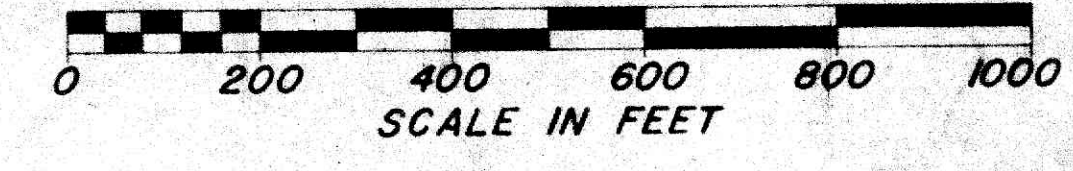


CENTERLINE SURVEY PLAT

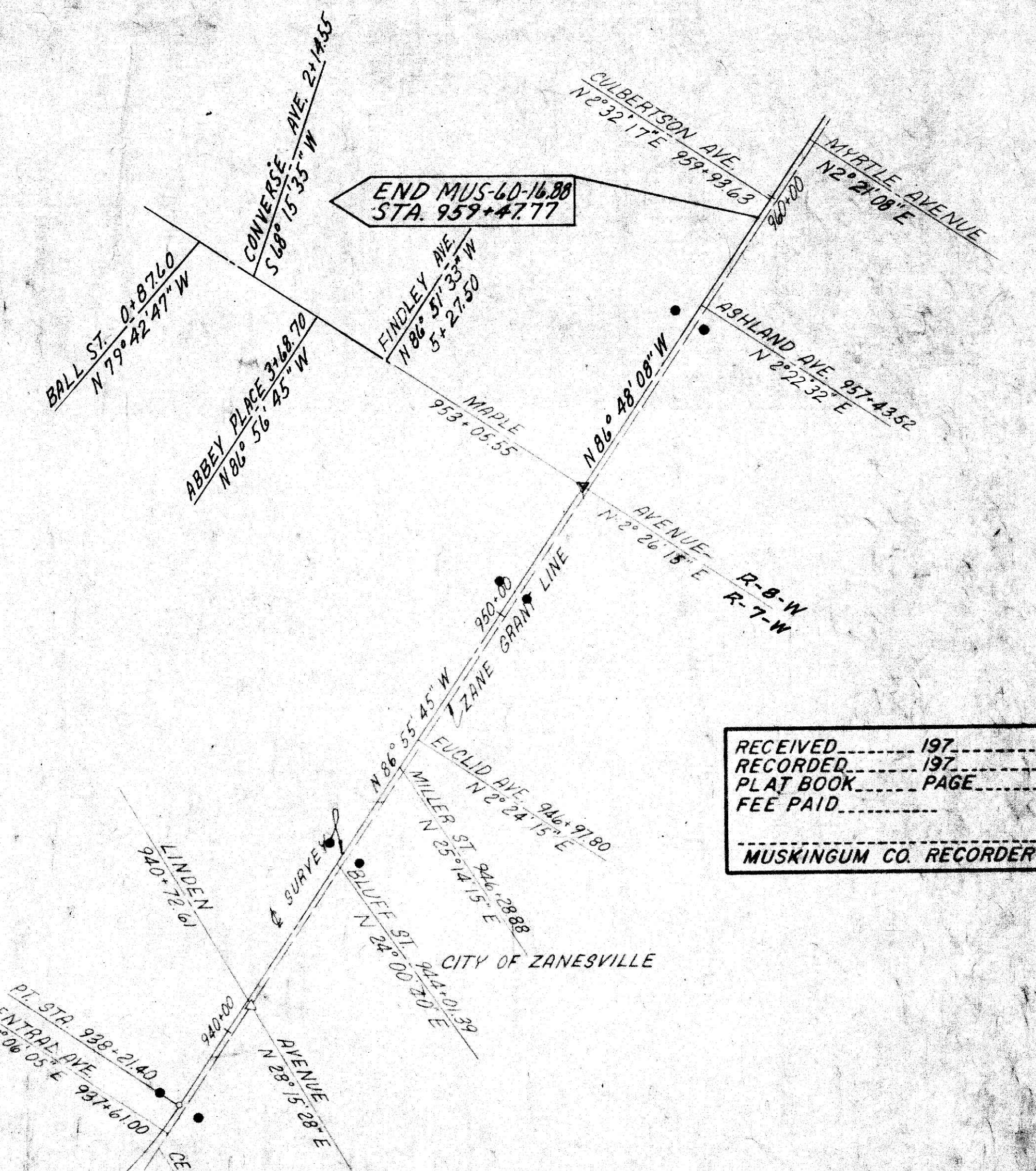
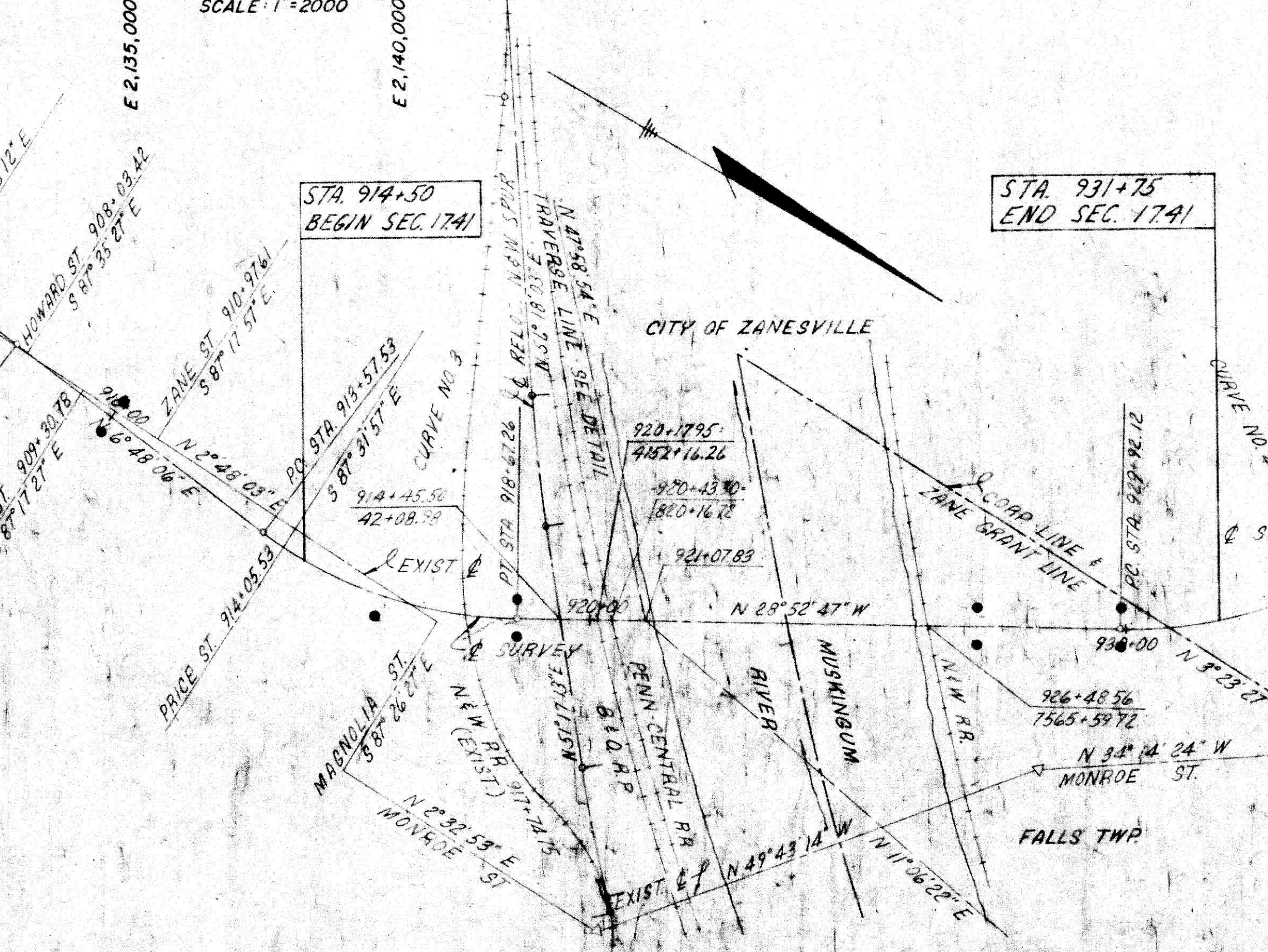
MUS-60-(16.88)(17.41)

MUSKINGUM COUNTY

CITY OF ZANESVILLE, FALLS TOWNSHIP T-1-N, R-7-W



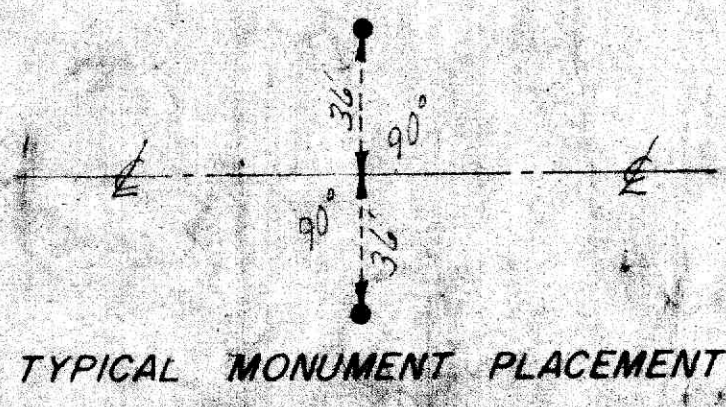
DETAIL OF HORIZONTAL CONTROL TIE TO MONUMENT ZANE				
		GRID COORDINATES		
DESCRIPTION	BEARING	DISTANCE	NORTH	EAST
MON. ZANE #			709,609.800	2,141,685.010
ZANE #1	N88°15'01"W	5426.413	709,775.482	2,136,261.127
ZANE #2	S61°10'18"E	1929.491	708,845.104	2,137,951.491
P.O.T. 921+07.83	N47°58'54"E	2385.265	710,441.723	2,139,723.579
P.I.#4 934+46.29	N28°52'47"W	1938.462	711,613.726	2,139,077.136
P.O.T. 953+05.55	N86°55'45"W	1938.320	711,717.563	2,137,141.599
P.O.T. 890+25.66			707,414.211	2,139,782.330
P.I.#1 892+94.83	N7°03'37"E	269.174	707,681.344	2,139,815.416
P.I.#2 905+95.74	N1°19'37"E	671.110	708,982.105	2,139,845.546
P.I.#3 916+20.97	N6°48'06"E	1025.510	710,000.397	2,139,967.000
P.O.T. 921+07.83	N28°52'47"W	504.006	710,441.723	2,139,723.579
ARMCO SMOKESTK.	N11°06'22"E	4054.134	714,419.930	2,140,504.520
MON. ZANE	S13°41'20"E	4952.869		



RECEIVED.....197
 RECORDED.....197
 PLAT BOOK.....PAGE
 FEE PAID.....
 MUSKINGUM CO. RECORDER

• DENOTES & REFERENCE MONUMENT AS PER STANDARD DRAWING MC-1 (REV 6-13-69)

NOTE ALL MONUMENTS ARE TO BE PLACED UNDER THE SUPERVISION OF A REGISTERED SURVEYOR, AND ANY ALTERATIONS SHALL BE NOTED AND THE RIGHT OF WAY DEPARTMENT OF THE DIVISION SHALL BE NOTIFIED OF THE LOCATION.



MONUMENTS			
QUAN	STATION	LOCATION	REMARKS
2	890+70	36' RT & LT	P.O.T.
2	891+6732	45' RT & LT	P.C.
2	894+2214	36' RT & LT	P.T.
2	904+13.11	36' RT & LT	P.C.
2	910+00	36' RT & LT	P.O.T.
1	916+20.97	& OF SURVEY	P.I.
2	918+67.26	36' RT & LT	P.T.
2	927+30	36' RT & LT	P.O.T.
2	929+92.12	36' RT & LT	P.C.
2	934+00	36' RT & LT	P.O.C.
2	938+21.40	45' RT & LT	P.T.
2	944+25	36' RT & LT	P.O.T.
2	950+80	36' RT & LT	P.O.T.
2	957+00	36' RT & LT	+P.O.T.
TOT. 27	REFERENCE MONUMENTS		

CENTERLINE CURVE DATA & COORDINATES FOR P.I.'S, P.C.'S & P.T.'S															
CURVE NO.	P.I.	NORTH	EAST	Δ	D	R	L	T	E	R.C.	NORTH	EAST	P.T.	NORTH	EAST
1	892+94.83	707,681.344	2,139,815.416	5°44'00"LT	2°15'00"	2546.48'	254.82'	127.51'	3.19'	891+67.32	707,864.797	2,139,799.743	894+22.14	707,808.824	2,139,818.369
2	905+95.74	708,982.105	2,139,845.546	5°28'29"RT	1°30'00"	3819.72'	364.98'	182.63'	4.36'	904+13.11	708,799.524	2,139,841.317	907+78.09	709,163.450	2,139,867.175
3	916+20.97	710,000.397	2,139,967.000	35°40'53"LT	7°00'00"	818.51'	509.73'	263.44'	41.35'	913+57.53	709,788.811	2,139,935.800	918+67.26	710,231.074	2,139,839.766
4	934+46.29	711,613.726	2,139,077.136	58°02'58"LT	7°00'00"	818.51'	829.28'	454.17'	117.56'	929+92.12	711,216.099	2,139,296.488	938+21.40	711,638.056	2,138,623.618

PREPARED BY
RICHLAND ENGINEERING LTD.
 CONSULTING ENGINEERS
 MANSFIELD, OHIO

I HEREBY CERTIFY THAT THIS PLAT IS A TRUE DELINEATION OF A SURVEY MADE FOR THE STATE OF OHIO IN 1971 BY RICHLAND ENGINEERING LIMITED, CONSULTING ENGINEERS.
 C.B. Parrett DATE Dec 1, 1971
 C.B. PARRETT REG. SURVEYOR NO. 2871